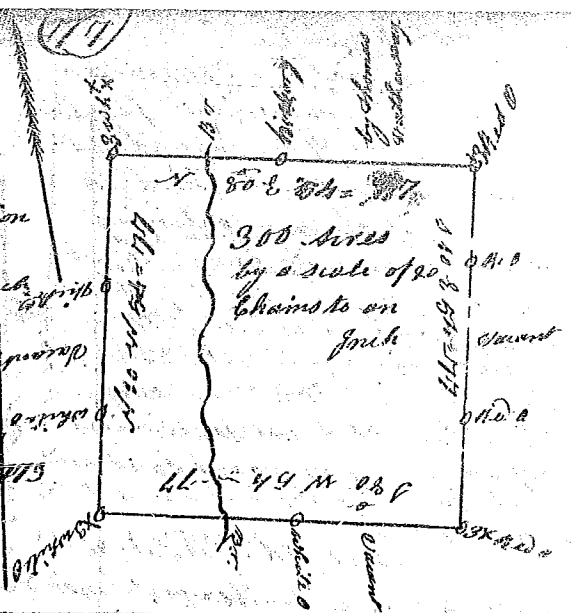


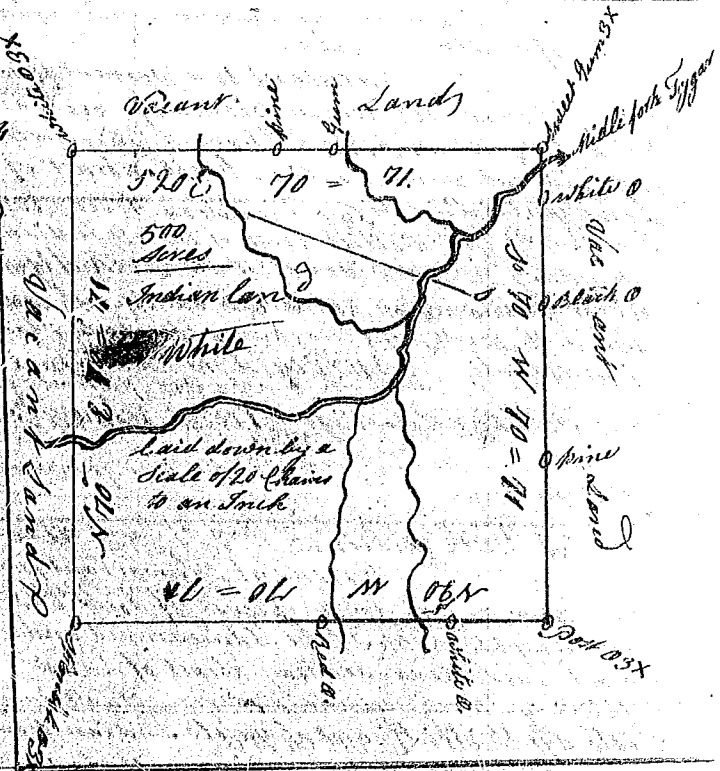
South Carolina

Pursuant to a precept com-
 manded under the hand and seal of John
 Bremer Esq. Deputy Surveyor Genl. dated
 the 2^d day of March 1783 I have admeasured
 and laid out unto George Nevil a plantation
 or tract of land containing 300 acres
 situated in Craven County lying on a branch
 of Lawson's fork called Faint branch bound-
 ed N.E. by Thomas Withaway and all other
 sides vacant, and hath such shape
 form and marks as the above plat repre-
 sents. Certified by me this 17th day June 1784
 James Wood D.S.
 Recorded the 5th day of August 1784



State of South Carolina

Pursuant to a warrant
 from John Thomas Esq. Commissioner
 of locations dated the 21st day of May 1784
 I have admeasured and laid out unto
 Henry White Esq. a tract of Six hundred
 acres of land situate in Ninety six dis-
 trict on the Middle Fork of Sugar River
 bounding on all sides by Vacant Land
 and hath such shape and marks as
 the above plat represents.
 Surveyed the 15th day of June 1784
 Wm. Benson, D.S.
 Recorded the 6th day of August 1784



State of South Carolina

Pursuant to a warrant from John
 Thomas Commissioner of locations dated May
 the 24th day of May 1784 I have admeasured
 and laid out unto John Deming a tract
 of six hundred and forty acres Situate in
 Ninety six district on Horse Creek west side of
 river bounding on all on vacant land
 and hath such shape and marks as the
 above plat represents.
 Surveyed the 10th day of June 1784
 Wm. Benson, D.S.
 Recorded the 6th of August 1784

