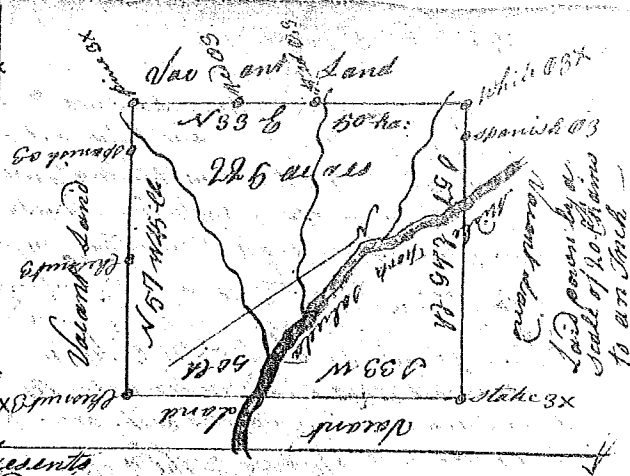


State of South Carolina

(71)

Pursuant to a warrant from John Thomas Esq. Commissioner of Locations dated May 21st 1784, I have admeasured and laid out unto Daniel M^o Junkin a tract of Land containing two hundred and twenty five Acres situate in Ninety six district west of the ancient Boundary line on both sides of the Middle Fork of Saluda River Bounding on all sides on Vacant Land, and hath such form and Marks as the above plat Represents

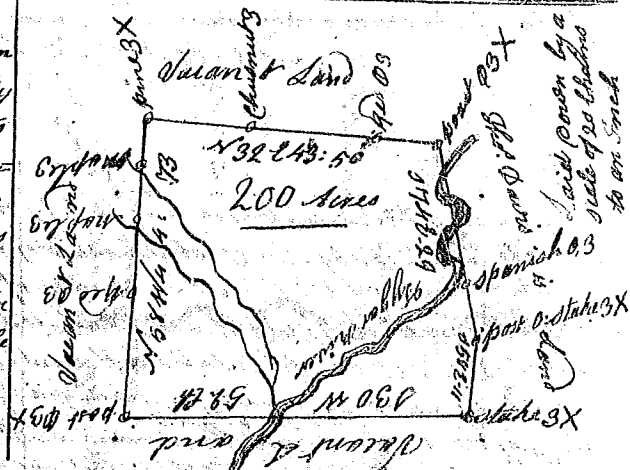
Recorded the 2^d day of Aug^r 1784 / Surveyed the 21st day of May 1784
George Salmon D. S.



State of South Carolina

Pursuant to a warrant from John Thomas Esq. Commissioner of Locations dated May the 21st 1784 I have admeasured and laid out unto Nicolas Jasper a tract of Land containing two hundred Acres situate lying and being in Ninety six district west of old Indian Boundary on both sides of South Tager River Bounding on the sea on land laid out for unto Thomas Davis all other sides on Vacant Land and hath such form and Marks as the above plat Represents

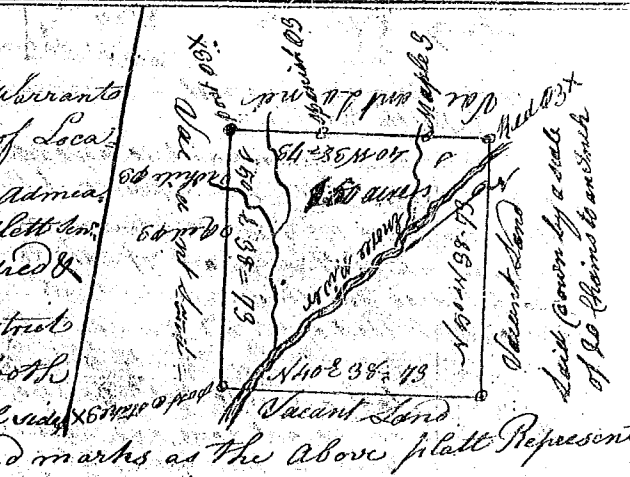
Surveyed the 6th of June 1784
Recorded the 3^d August 1784
Geo. Salmon D. S.



State of South Carolina

Pursuant to a warrant from John Thomas Esq. Commissioner of Locations dated May 21st 1784 I have admeasured and laid out unto Robert Gosdlett Esq. a tract of Land containing one hundred & fifty acres situate in Ninety six District West of the old Boundary line on both sides of Enorce river Bounded on all sides by Vacant Land and hath such form and marks as the above plat Represents

Recorded the 3^d day of August 1784 / Surveyed the 27th of May 1784
George Salmon D. S.



State of South Carolina

Pursuant to a warrant from John Thomas Esq. Commissioner of Locations dated May 21st 1784 I have admeasured and laid out unto Benjamin Clark a tract of Land containing two hundred Acres situate in Ninety six District west of the old Boundary line on both sides of Cheepunoa River of Saluda including the Town House bounded on all sides by Vacant Land, and hath such form and Marks as the above plat Represents. Surveyed the 3^d of June 1784
Recorded the 4th day of August 1784

Geo. Salmon D. S.

