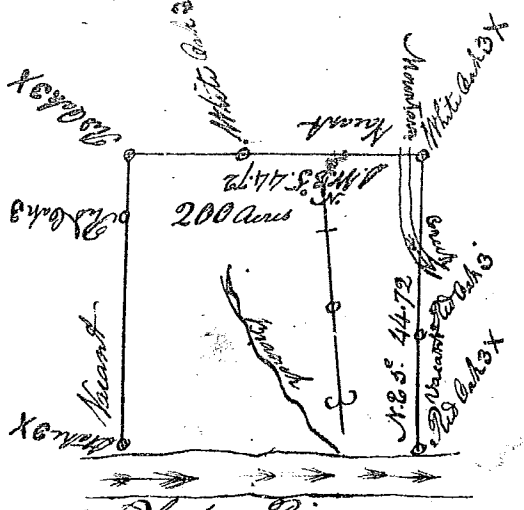


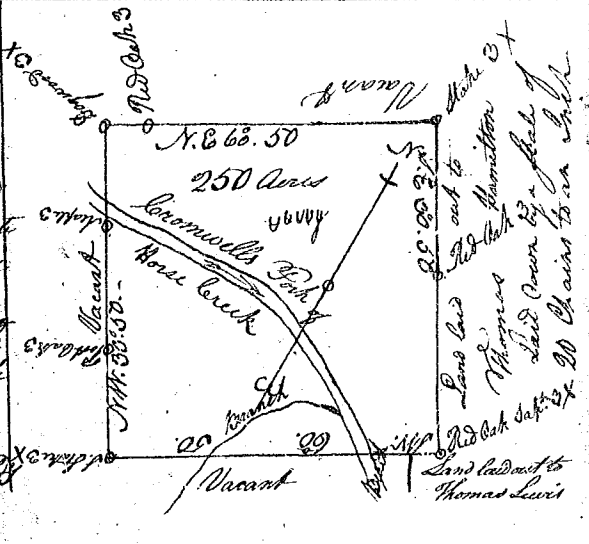
(51)



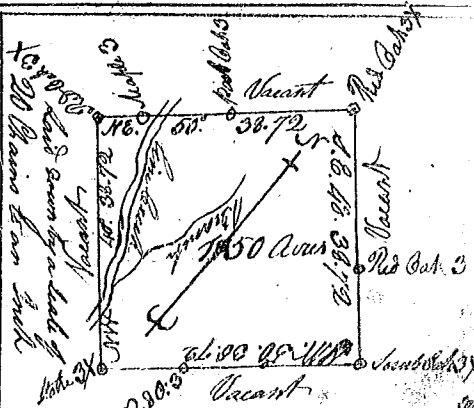
South Carolina Pursuant to a warrant to me directed under the hand and seal of John Thomas Esq. Commissioner of Locations for Ninety Six District North of Saluda River dated the 21st of May 1784 I have admeasured and laid out unto Charles Lewis a Tract of Land containing Two Hundred Acres in Ninety Six District North of Saluda, situate lying and being on Saluda River, Bounding on the S. by Saluda River all other sides on Vacant Land, and hath such shape form, and Marks as the above Plat represents. Surveyed the 11th Day of June 1784 Thomas Lewis Esq. Recorded the 26th Day of July 1784

Saluda River Laid down by a scale of 20 Chains to an Inch

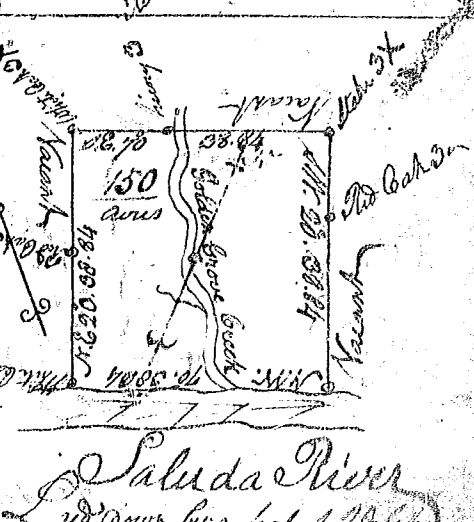
South Carolina Pursuant to a warrant to me directed under the hand and seal of John Thomas Esq. Commissioner of Locations for Ninety Six District North of Saluda River dated the 21st Day of May 1784, I have admeasured and laid out unto Joshua Lewis a Tract of Land containing two hundred and fifty Acres in Ninety Six District North of Saluda River, situate lying and being on Cromwells Fork of Horse Creek a Branch of Ruddy River, Bounding on the N. by land laid out to Thomas Lewis and Vacant Land on the N.W. & N.E. on Vacant Land, on the S.E. on Land laid out to Thomas Burritton, and hath such shape form and Marks as the above plat represents. Surveyed the 12th Day of June 1784 Thomas Lewis Esq. Recorded the 26th Day of July 1784



South Carolina Pursuant to a warrant to me directed under the hand and seal of John Thomas Esq. Commissioner of Locations for Ninety Six District North of Saluda River dated the 21st Day of May 1784 I have admeasured and laid out unto Charles Lewis a Tract of Land containing one hundred and fifty Acres, situate lying and being in Ninety Six District North of Saluda River on Cromwells Fork a Branch of Saluda River, Bounding on all sides by Vacant land and hath such shape form and Marks as the above plat represents. Surveyed the 12th Day of June 1784 Thomas Lewis Esq. Recorded the 26th Day of July 1784



South Carolina Pursuant to a warrant to me directed under the hand and seal of John Thomas Esq. Commissioner of Locations for Ninety Six District North of Saluda River dated the 11th Day of June 1784, I have admeasured and laid out unto Charles Lewis a Tract of Land containing one hundred and fifty Acres, in Ninety Six District North of Saluda River, situate lying and being on both sides of the Cotton Grove Creek, Bounding on the N.E. S.E. & W. on Vacant land on the N.W. side on Saluda River, and hath such shape form and Marks as the above Plat represents. Surveyed the 1st Day of June 1784 Thomas Lewis Esq. Recorded the 26th Day of July 1784



Saluda River Laid down by a scale of 20 Chains to an Inch