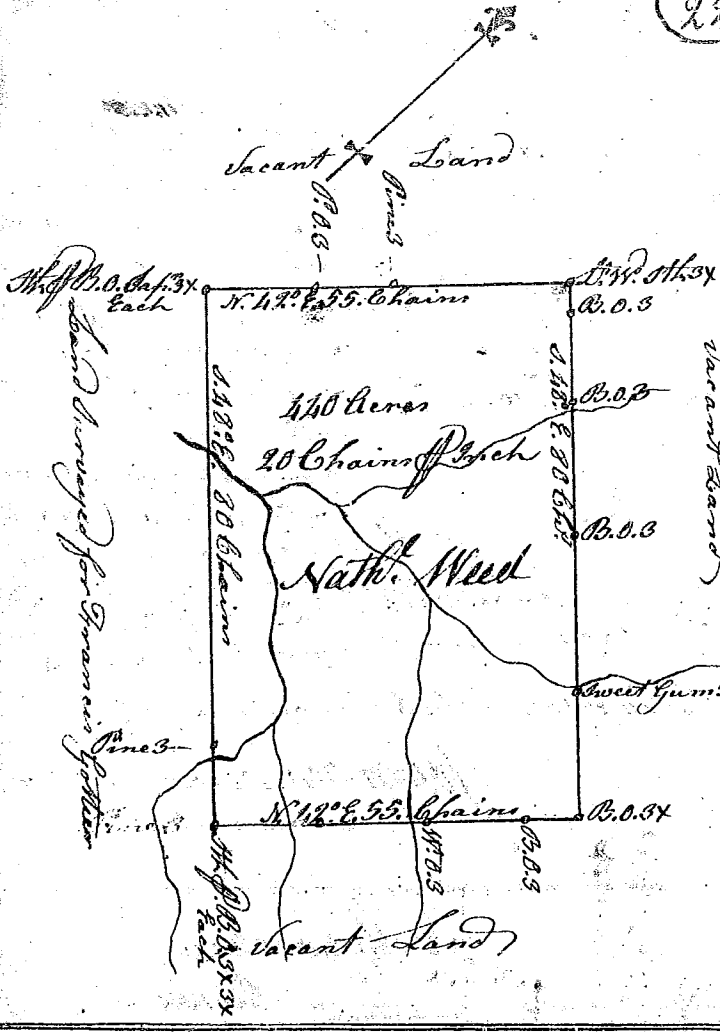


22 South Carolina

Pursuant to a Warrant from John Thomas Esq^r Commissioner of Locations in the District of Ninety Six bearing Date the 21st Day of May 1784. I have Admeasured and laid out unto Nathaniel Weed a Tract of Land containing Four Hundred and forty Acres above the Ancient Boundary line situated on Branches of the Golden Grove Creek a Branch of Saludy River, butting and bounding to the S.W. on Land surveyed for Francis Gother and All other sides on vacant Land and hath such form and Marks as the Above Plat represents.

Surveyed the 21st Day of May 1784
John Bowler D.S.

Recorded the 1st July 1784.
Delivered to John Bowler



South Carolina

Pursuant to a Warrant from John Thomas Esquire Commissioner of Locations in the District of Ninety Six bearing date the 21st Day of May 1784. I have Admeasured and laid out unto Francis Gother a Tract of Land containing Six Hundred and forty Acres above the Ancient boundary line situate on the Golden Grove Creek a branch of Saludy River butting and bounding on all sides on vacant Land and hath such form and Marks as the Above Plat represents.

Surveyed the 21st Day of May 1784
John Bowler D.S.

Recorded the 1st Day of July 1784
Delivered to John Bowler

