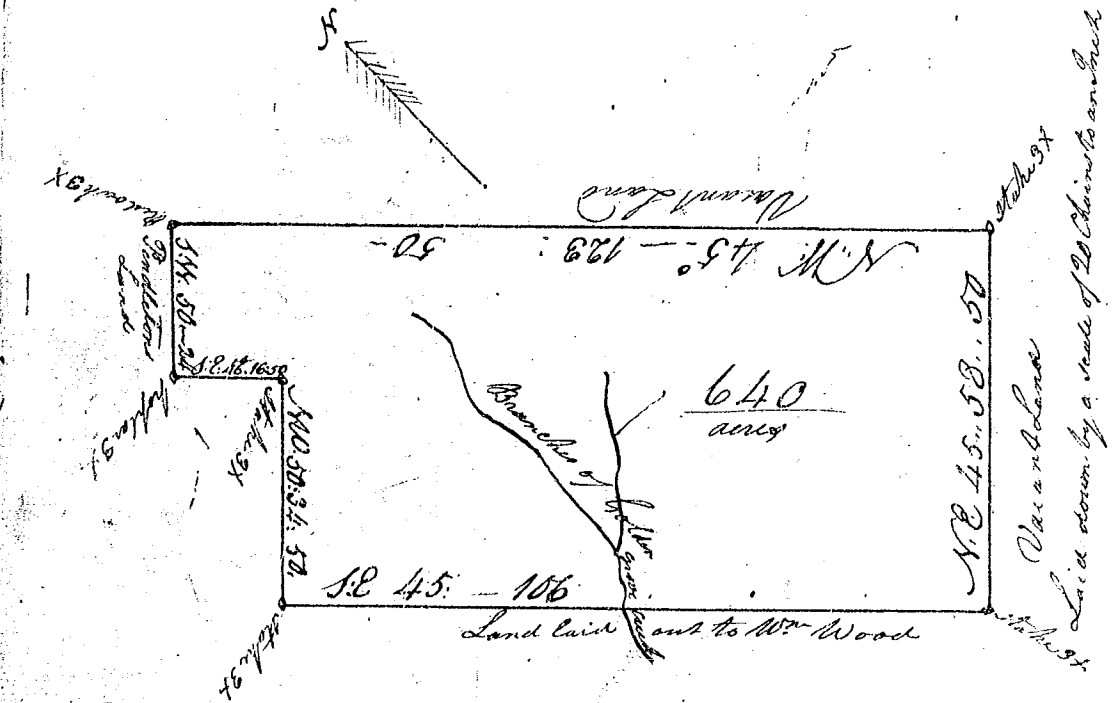
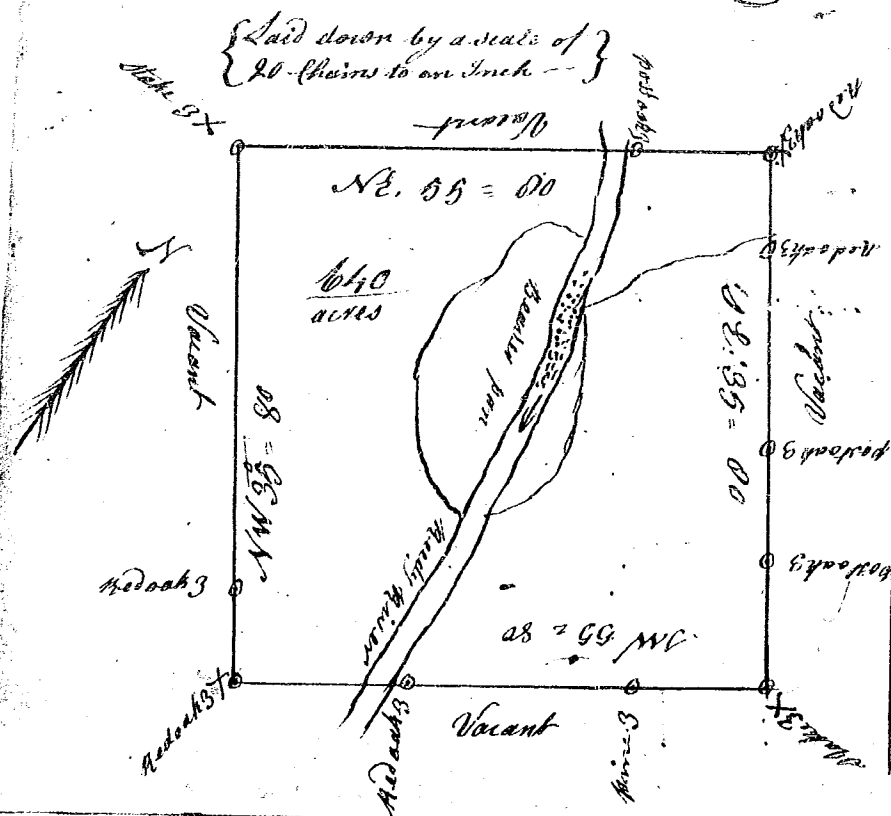


South Carolina  
 Pursuant to a warrant to me directed under the hand Seal of John Thomas Esquire, Commissioner of Locations in 96<sup>th</sup> district North of Saluda river, bearing date the 21<sup>st</sup> day of May 1784, I have admeasured & laid out unto John Goodwin, a tract of land containing six hundred forty acres, situated in the district aforesaid, lying and being on Cuddy River of Saluda, bounded on all sides by vacant land; and hath such shape, form & marks as the above plat represents  
 Surveyed on the 26<sup>th</sup> day of May 1784  
 Thomas Lewis Esq.  
 Recorded on the 10<sup>th</sup> day of June 1784



South Carolina  
 Pursuant to a warrant to me directed under the hand Seal of John Thomas Esquire, Commissioner of Locations in Ninety six District North of Saluda river, bearing date the 21<sup>st</sup> day of May 1784, I have admeasured, and laid out unto Adamus Barber Esquire a Tract of land containing six hundred & forty acres, on the district lying & being on a small branch of Golden Grouse creek, waters of Saluda River bounded Northwardly, on lands laid out unto Henry Pendleton Esq. South Eastwardly, on lands laid out unto William Wood Esq. Westwardly & Northwardly, on vacant lands, and hath such shape, form & marks as the above plat represents  
 Surveyed on the 25<sup>th</sup> day of May 1784  
 Thomas Lewis Esq.  
 Recorded on the 10<sup>th</sup> day of June 1784