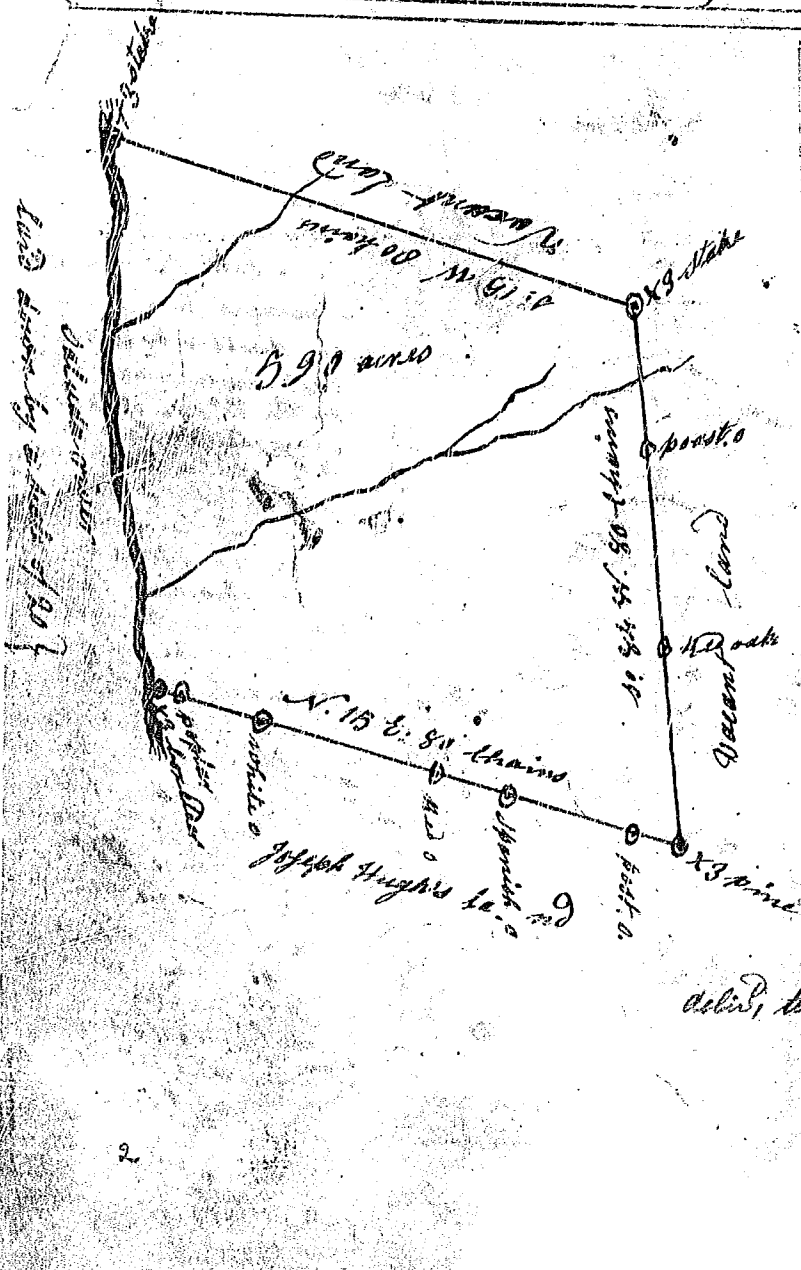


State of South Carolina,  
 Pursuant to a warrant from John  
 Thomas Esq. Commissioner of Locations  
 dated 21 day of May 1784, I have ad-  
 measured and laid out unto  
 Joseph Hughes a tract of land contain-  
 ing six hundred and forty acres -  
 situate in Ninety six district on  
 the North side Saluda River about  
 one mile above the forks, bounding  
 N.E. on land laid to Henry Woolf  
 S.W. on Saluda River, all other  
 sides Vacant and hath such  
 form and marks as the above plot  
 represents - Surveyed 22 day  
 May 1784  
 George Salmon D. Suror.



State of South Carolina  
 Pursuant to a warrant from  
 John Thomas Esq. Commissioner  
 of Locations, dated 21 May 1784, I have  
 admeasured and laid out to Henry  
 Woolf a tract of land containing  
 five hundred and Ninety four acres  
 situate in Ninety six district on  
 the north side of Saluda river about  
 two miles above the forks, bounding  
 N.E. on land laid out for Joseph  
 Hughes all other by Vacant land  
 and hath such form and marks as  
 the above plot represents,  
 Surveyed the 22, May 1784,  
 George Salmon D. Suror,  
 De. to Saml Earle