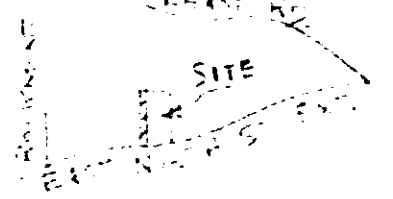
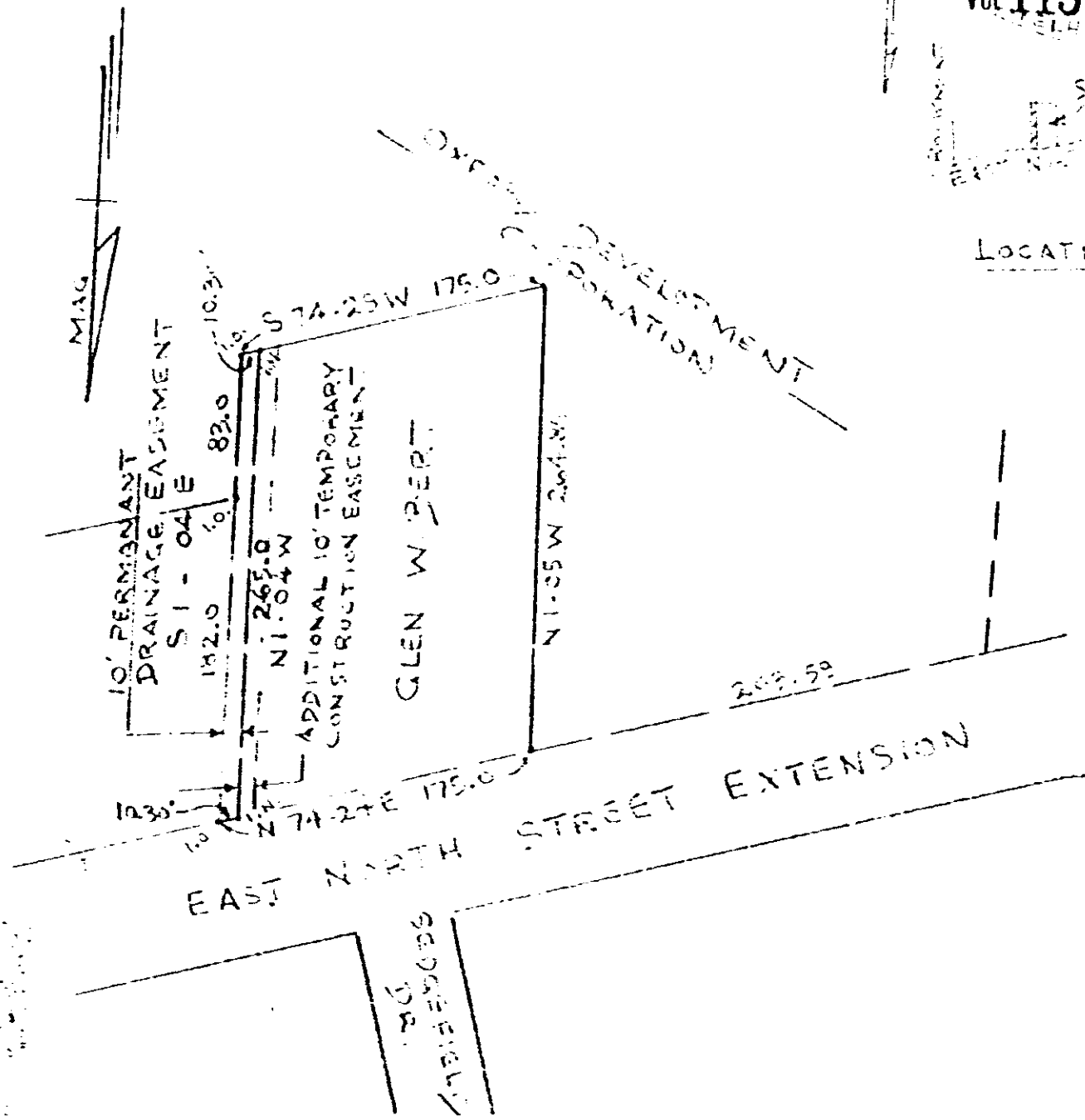


EXHIBIT A

VOL 1197 PAGE 590



LOCATION



THIS DRAINAGE EASEMENT  
CONTAINS 0.060 AC. AND  
HAS A 1/2" 200# CLOSURE  
BY THE DND METHOD.

*James D. Cain*  
RLS 3320

DRAINAGE EASEMENT SURVEY FOR  
OXFORD DEVELOPMENT CORPORATION

GREENVILLE COUNTY, S.C.  
SCALE 1" = 100' SEPT. 12, 1983



PIEDMONT ENGINEERS - ARCHITECTS - PLANNERS  
GREENVILLE S.C.

11007

• I.O. 1804 PA. 12  
• I.N. 1001 T.N. 20

RECORDED OCT 3 1983 at 2:32 p.m.

6  
5  
0

74328-RV-27