

UNION CARBIDE (REF DWG. NO 35-

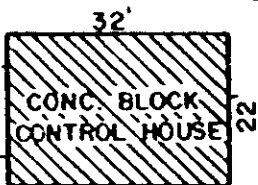
NEBRASKA STREET TO MINNESOTA STREET

TO U.S. HWY NO 25

DRIVE

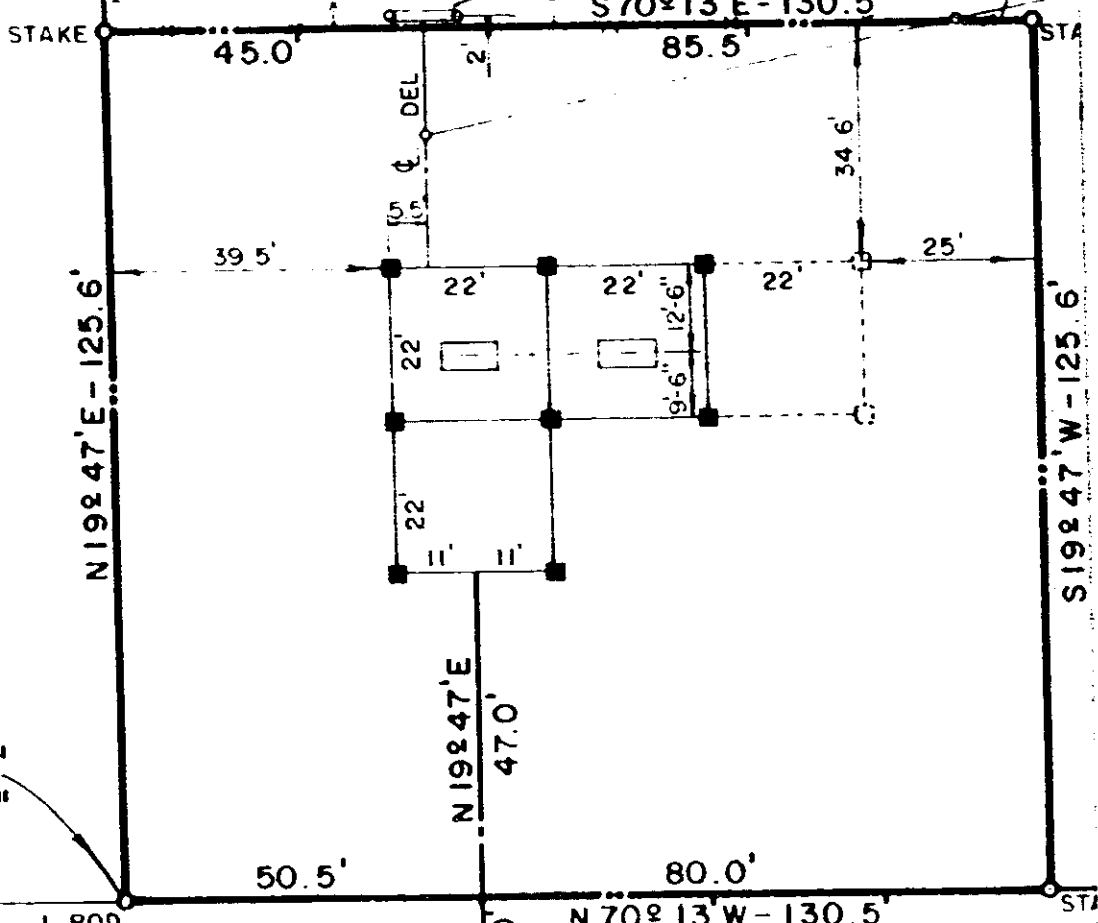
GRAVEL

DISTRIBUTION LINE



EXISTING DELIVERY STRUCTURE S70°13'E-130.5'

DUKE POWER COMPANY REF. DWG. NO. 34-15



LAT. 34°44'-13" LONG. 82°23'-20"

0+00 = 171+01.5 TAP LINE

TO SHADY GROVE

44 KV LINE REF DWG NO. 515-08 & 101-123

HF-71 (TO BE REMOVED)

S70°13'E

DUKE POWER COMPANY REF. DWG. NO. 34-15

TO MOONVILLE TAP

100 KV LINE REF DWG NO. 509-08 & 104-120

0843

4328 RV-2