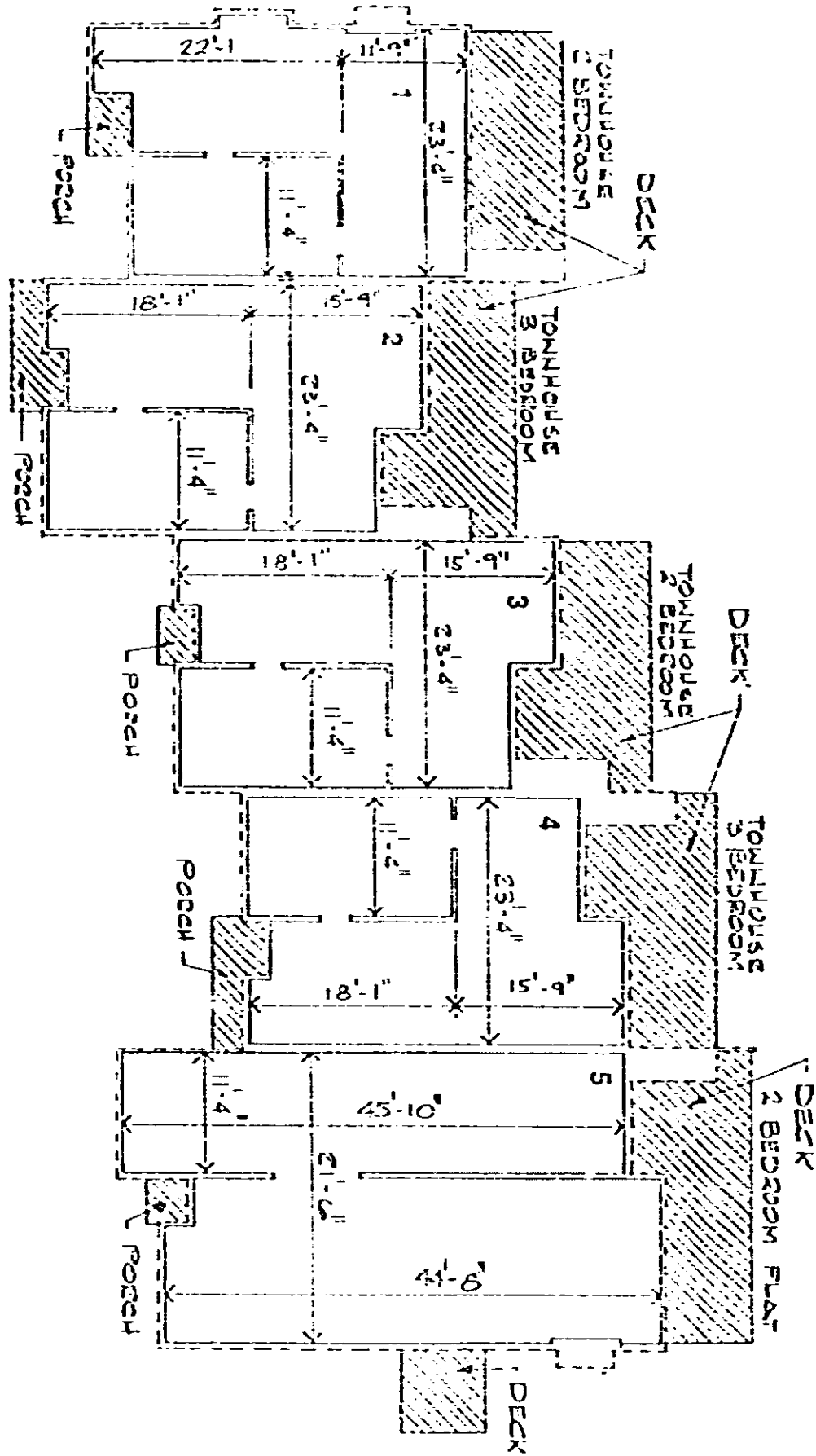


NO. 1-5 FL. PLAN (1st)

LIMITED COMMON ELEMENTS
GENERAL COMMON ELEMENTS



I, Charles F. Gentry, Jr., hereby certify that the within floor plan are true and correct to the best of my knowledge.
Charles F. Gentry, Jr.
Architect
South Carolina Registration No. 511

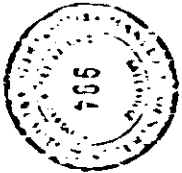


EXHIBIT B

Page 3

GRAYSTONE 1 HORIZONTAL PROPERTY REGIME

CHARLES F. GENTRY A.I.A. ARCHITECT

GREENVILLE

SOUTH CAROLINA

2

5-20-81

0 6 3 7

4328 RV.2