

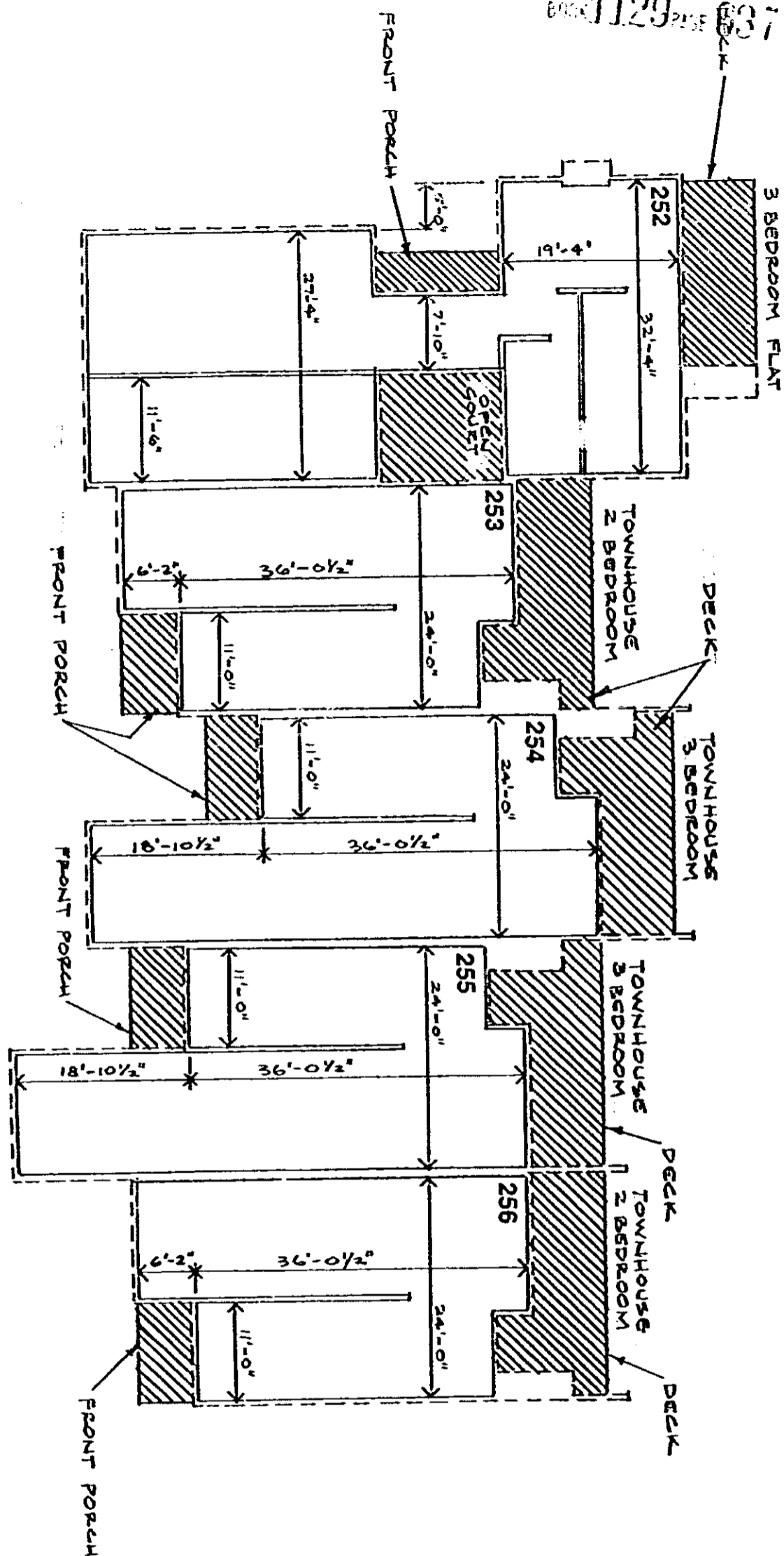


BOOK 129 PAGE 837

NO. 252-256 FL. PLAN (1st)

 LIMITED COMMON ELEMENTS
 GENERAL COMMON ELEMENTS



I, Charles F. Gentry, Jr., hereby certify
 that the within Floor Plans are true and
 correct to the best of my knowledge.
 Charles F. Gentry, Jr., ARCHITECT
 South Carolina Registration No. 446



INGLESIDE HORIZONTAL PROPERTY REGIME

CHARLES F. GENTRY A.I.A. ARCHITECT

GREENVILLE

SOUTH CAROLINA

2

7-18-80

4328 RV-2

290