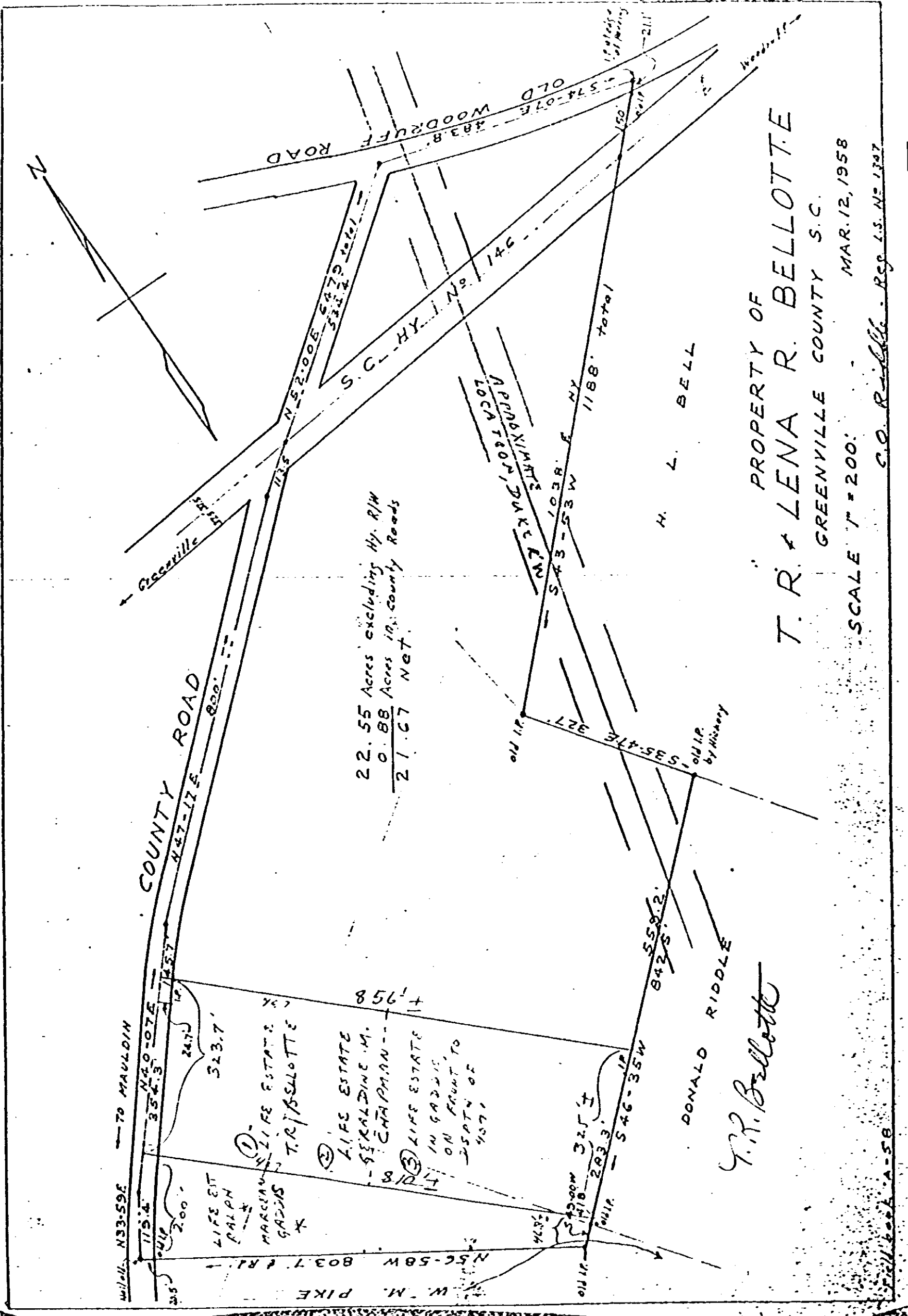


119-52



22.55 Acres excluding Hy. R/W
0.88 Acres in County Roads
<u>21.67 NGT.</u>

* GADDIS LIFE ESTATE WILL TERMINATE ON DEATH OF GERALDINE M CHAPMAN & BE SUBSTITUTED BY LIFE ESTATE IN ADJOINING LOT, 323.7' FRONTAGE BY 437' DEPTH

Exhibit "A" to Deed of
 T.R. Bellotte to Geraldine M Chapman
 RECORDED MAR 17 1980 at 3:40 P.M.

27575

4328 RV-2

0245