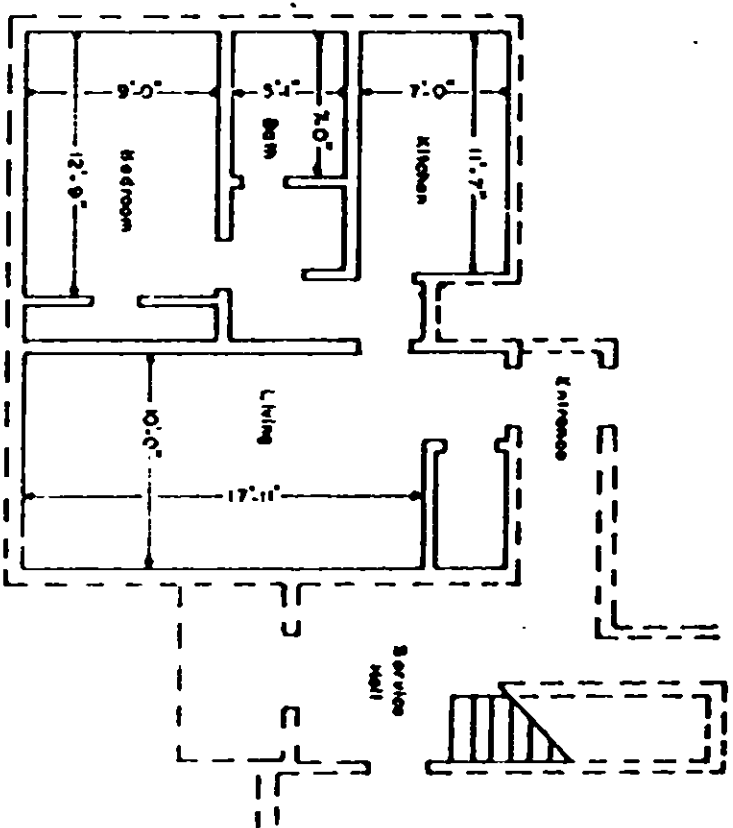


VOL 1098 PAGE 842

Boundary of unit ———
 Common Elements - - - -
 Stairs - Limited Common Elements [hatched box]



TYPICAL UNIT SCHEMATIC OF
 FLOOR PLAN FOR 1 BEDROOM
 LEWIS VILLAGE HORIZONTAL PROPERTY REGIME

GREENVILLE COUNTY
 GREENVILLE, SOUTH CAROLINA
 Scale 1" = 10' February, 1979
 DALTON & NEVES CO., ENGINEERS
 GREENVILLE, S. C.

This is to certify that this is a
 Typical Section of the following
 units of Lewis Village Horizontal
 Property Regime.
 (PLAZA)
 2A, 2D, 2M, 2P
 3A, 3D, 3M, 3P

R. W. Hall
 S. C. Reg. No. 916

580