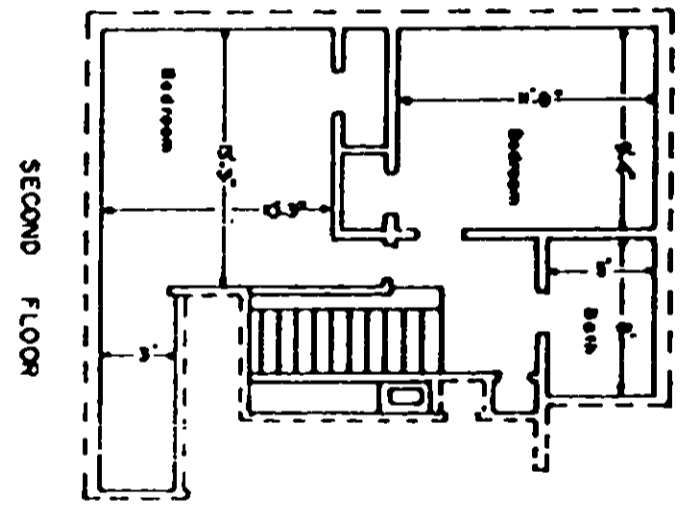
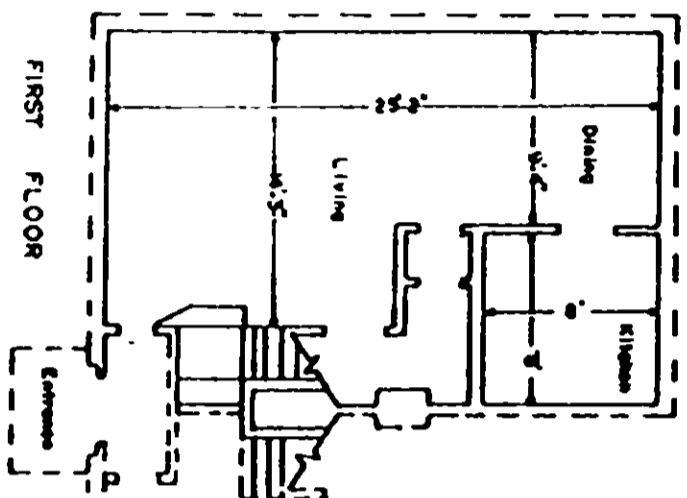


830

2-AV 8234



Boundary of unit - - - - -
 Common Elements - - - - -
 Stairs - Limited Common Elements [] [] [] []

This is to certify that this is a Typical Section of the following units of Lewis Village Horizontal Property Regime.

6A, 6B, 6C, 6D, 6E, 6F, 8A, 8B, 8C, 8D, 8E, 8F, 9A, 9B, 9C, 9D, 9E, 9F, 10A, 10B, 10C, 10D, 10E, 10F, 11A, 11B, 11C, 11D, 11E, 11F, 12A, 12B, 12C, 12D, 12E, 12F, 16A, 16B, 16C, 16D, 16E, 16F, 17A, 17B, 17C, 17D, 17E, 17F, 18A, 18B, 18C, 18D, 18E, 18F

R. W. Weaver
 S C Reg No 916

TYPICAL UNIT SCHEMATIC OF
 FLOOR PLAN FOR 2 STORY TOWNHOUSE
 LEWIS VILLAGE HORIZONTAL PROPERTY REGIME

GREENVILLE COUNTY
 GREENVILLE, SOUTH CAROLINA

Scale 1" = 10'
 February, 1979
 DALTON & NEVES CO., ENGINEERS
 GREENVILLE, S. C.