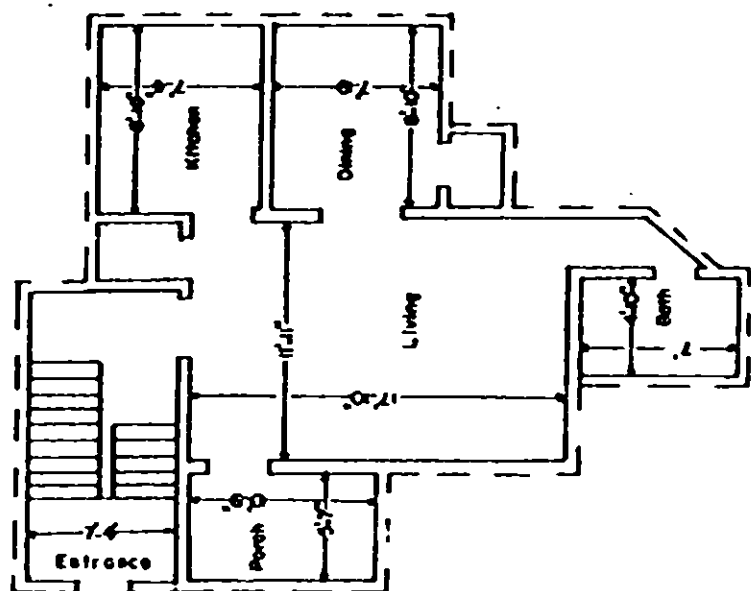


This is to certify that this is a Typical Section of the following units of McDaniel Heights Horizontal Property Regime.

2A, 2C, 8B, 12D, 12B

R. W. L. Dalton

S. C. Reg. No. 916



Boundary of unit ———
Common Elements - - -
Stairs - Limited Common Elements [hatched box]

TYPICAL UNIT SCHEMATIC OF
FLOOR PLAN FOR EFFICIENCY

MCDANIEL HEIGHTS HORIZONTAL PROPERTY REGIME

GREENVILLE CO., S. C.

Scale 1" = 10' Jan., 1979

DALTON & NEVES CO., ENGINEERS

EXHIBIT "B"
Number 6 of 12

1983-01-27