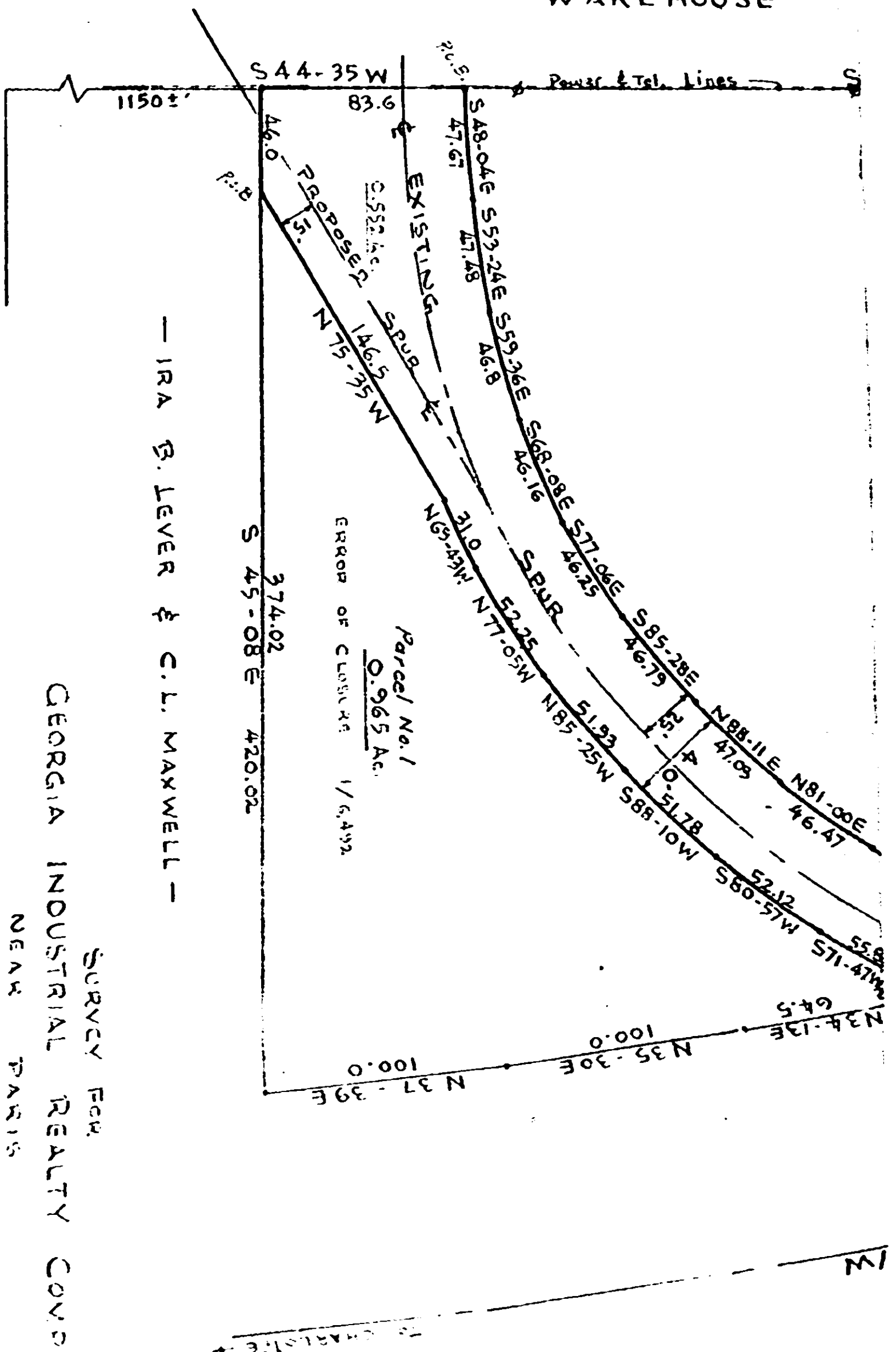


WAREHOUSE

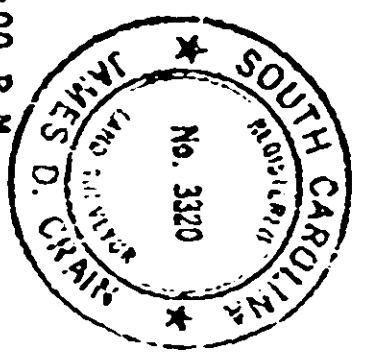


IRA G. LEVER & C. L. MAXWELL

GEORGIA INDUSTRIAL REALTY COMPANY  
SURVEY FOR  
NEAR PARIS

(OLD SEVIER CAMP ROAD) S.C. RD. NO. 21

NOTE - IRON PINS AT ALL CORNERS RECORDED FEB 20 1975 at 2:00 P.M.



GREENVILLE COUNTY, S.C.  
SCALE 1" = 50'  
MAY 12, 1977  
REV. APRIL 4, 1977  
REV. MAY 24, 1977  
DRAWING NO. TC-77-0029  
FILE 107-5-19074  
PIEDMONT ENGINEERS ARCHITECTS & PLANNERS  
GREENVILLE, S.C.