

DUKE POWER COMPANY
(OSCAR M. ISRAEL)
0.55 ACRE
TO NO 7562-8

CAROLINA COURT
SECTION 2

DUKE POWER COMPANY
QUALITY CADILLAC-OLDSMOBILE, (NC)
0.59 ACRE
TO NO 7562-9

CEMP B GARRISON, ET AL
REF DWG NO 59-81

Albert M. Lyerly
S.C., R.L.S. No. 2228
Duke Power Co.
Charlotte, NC

DUKE POWER COMPANY
TRANSMISSION LOTS
ACQUIRED FOR
SHADY GROVE TIE - GOLDEN GROVE RETAIL
TRANSMISSION LINE
NEAR GREENVILLE, S C
GREENVILLE COUNTY

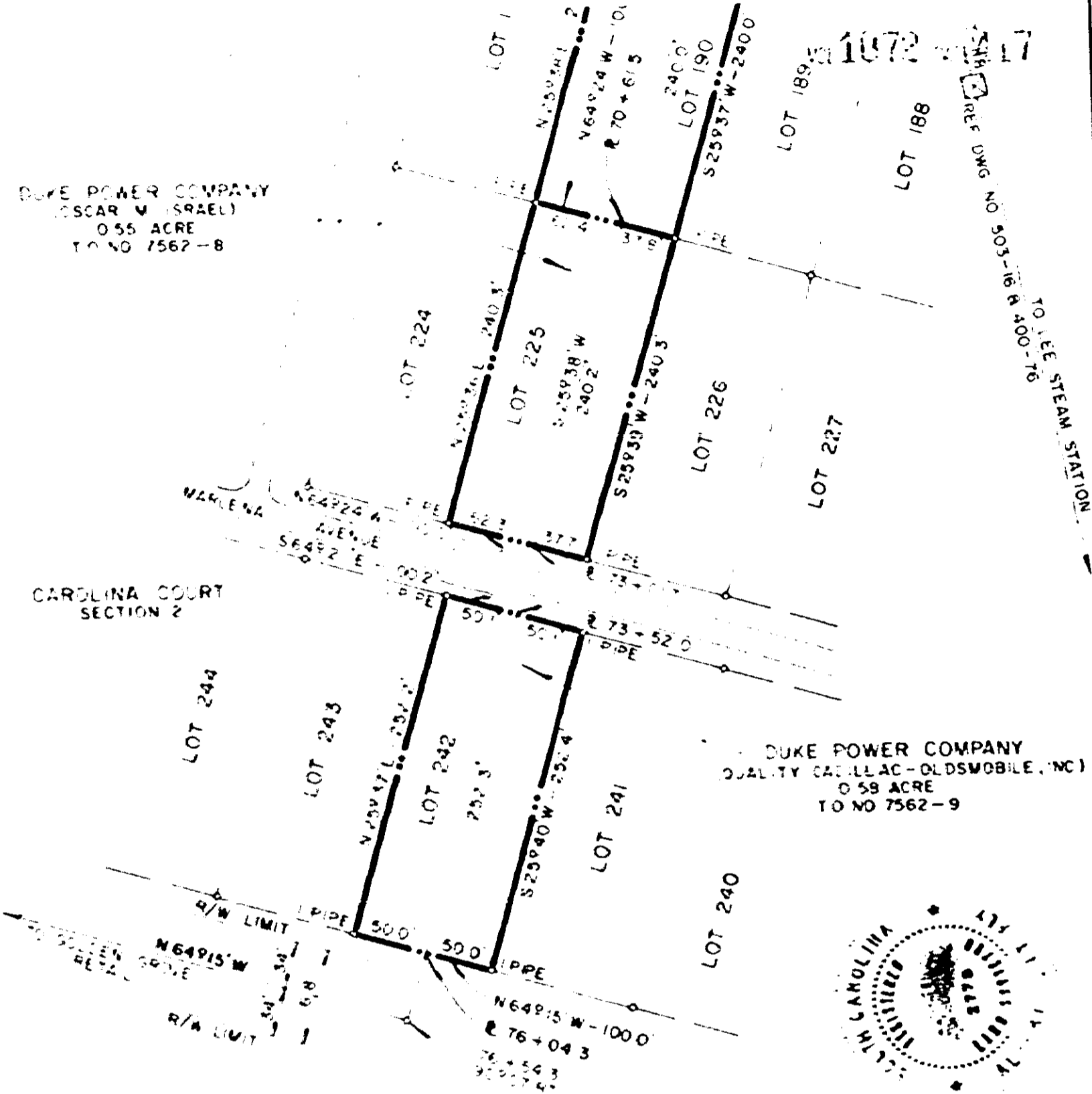
21559

RECORDED JAN 23 1978

At 3:31 P.M.

SCALE 1"=100'
BOOK NO 1562

NOVEMBER 21, 1977
FILE NO 54-112



4328 (V-2)

0417