

T.O. NO 7562-7

VOL 1070 PAGE 338

DUKE POWER COMPANY  
(OSCAR M<sup>3</sup> ISRAEL)  
0.55 ACRE  
T.O. NO 7562-8

CAROLINA COURT  
SECTION 2

DUKE POWER COMPANY  
(QUALITY CADILLAC-OLDSMOBILE, INC.)  
0.58 ACRE  
T.O. NO. 7562-9

CEMP B GARRISON, ET AL  
REF DWG NO 159-81

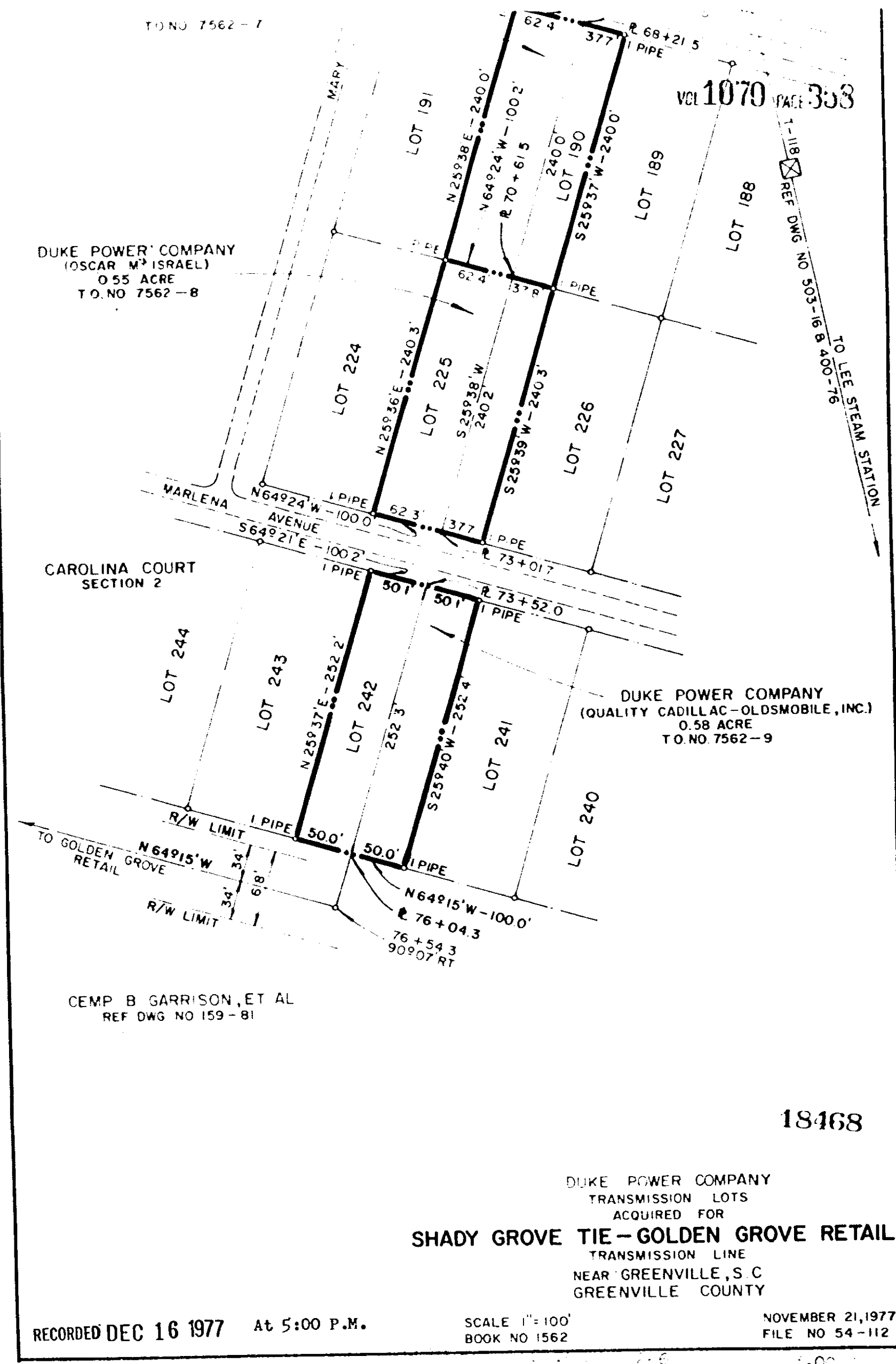
18468

DUKE POWER COMPANY  
TRANSMISSION LOTS  
ACQUIRED FOR  
**SHADY GROVE TIE - GOLDEN GROVE RETAIL**  
TRANSMISSION LINE  
NEAR GREENVILLE, S.C  
GREENVILLE COUNTY

RECORDED DEC 16 1977 At 5:00 P.M.

SCALE 1"=100'  
BOOK NO 1562

NOVEMBER 21, 1977  
FILE NO 54-112



4328 RV-2

0358