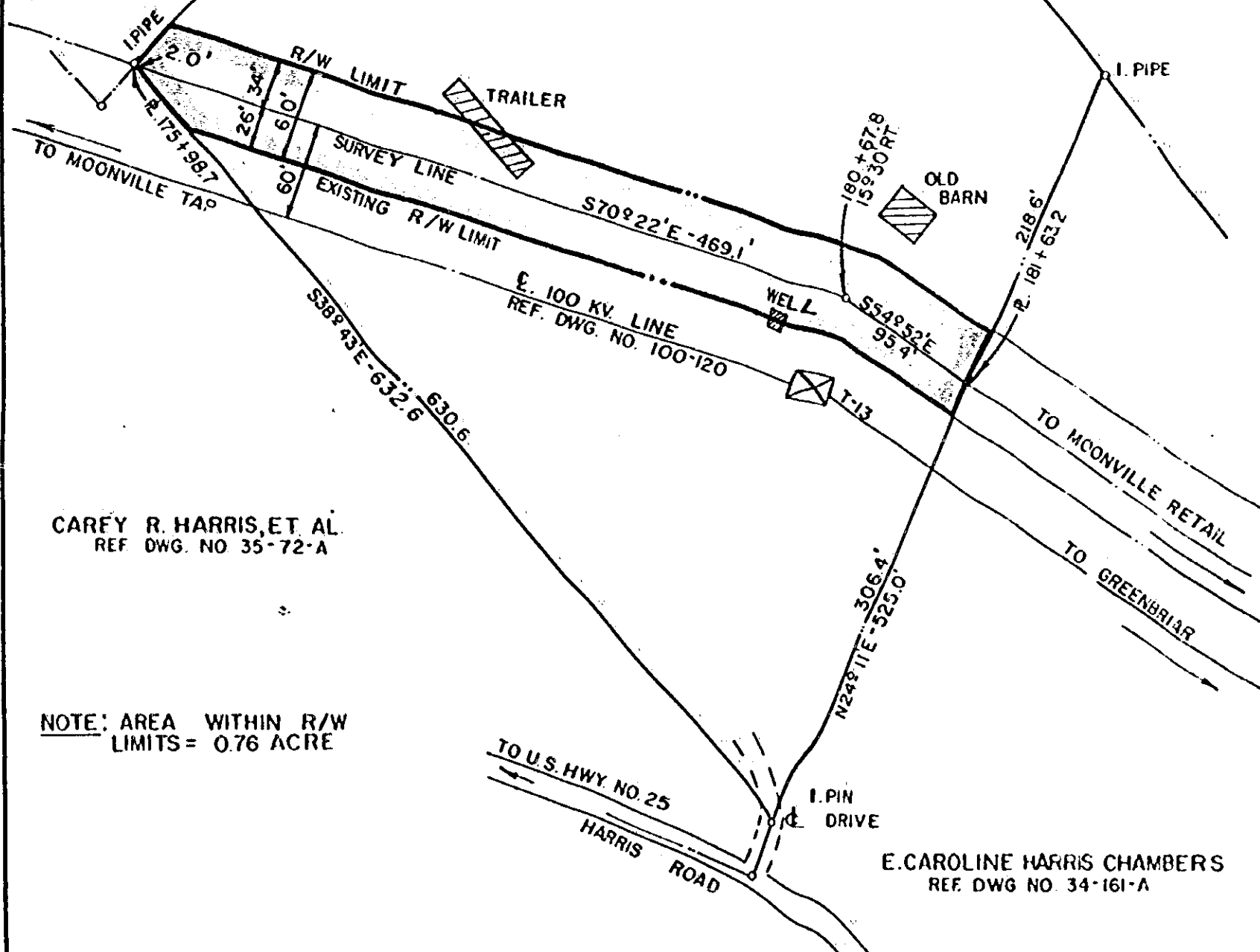


UNION CARBIDE
CORP.
REF. DWG NO.
35-72-A

WILLIAM R. HARRIS, SR
REF DWG NO 4-856

CAREY R. HARRIS
5.83 AC. TR.

TO SHADY GROVE



CAREY R. HARRIS, ET AL.
REF. DWG. NO. 35-72-A

NOTE: AREA WITHIN R/W
LIMITS = 0.76 ACRE

E. CAROLINE HARRIS CHAMBERS
REF. DWG. NO. 34-161-A

DUKE POWER COMPANY
SHADY GROVE - MOONVILLE RETAIL
TRANSMISSION LINE
CROSSING PROPERTY OF
CAREY R. HARRIS
NEAR GREENVILLE, S.C.
GANTT TOWNSHIP
GREENVILLE COUNTY

at 4:23 P.M. 5030

SCALE: 1" = 100'
BOOK NO. 1543

APRIL 30, 1976
FILE NO. 34-161-A

RECORDED AUG 20 '76

T.C. NO. 7503-4

4328 RV-2