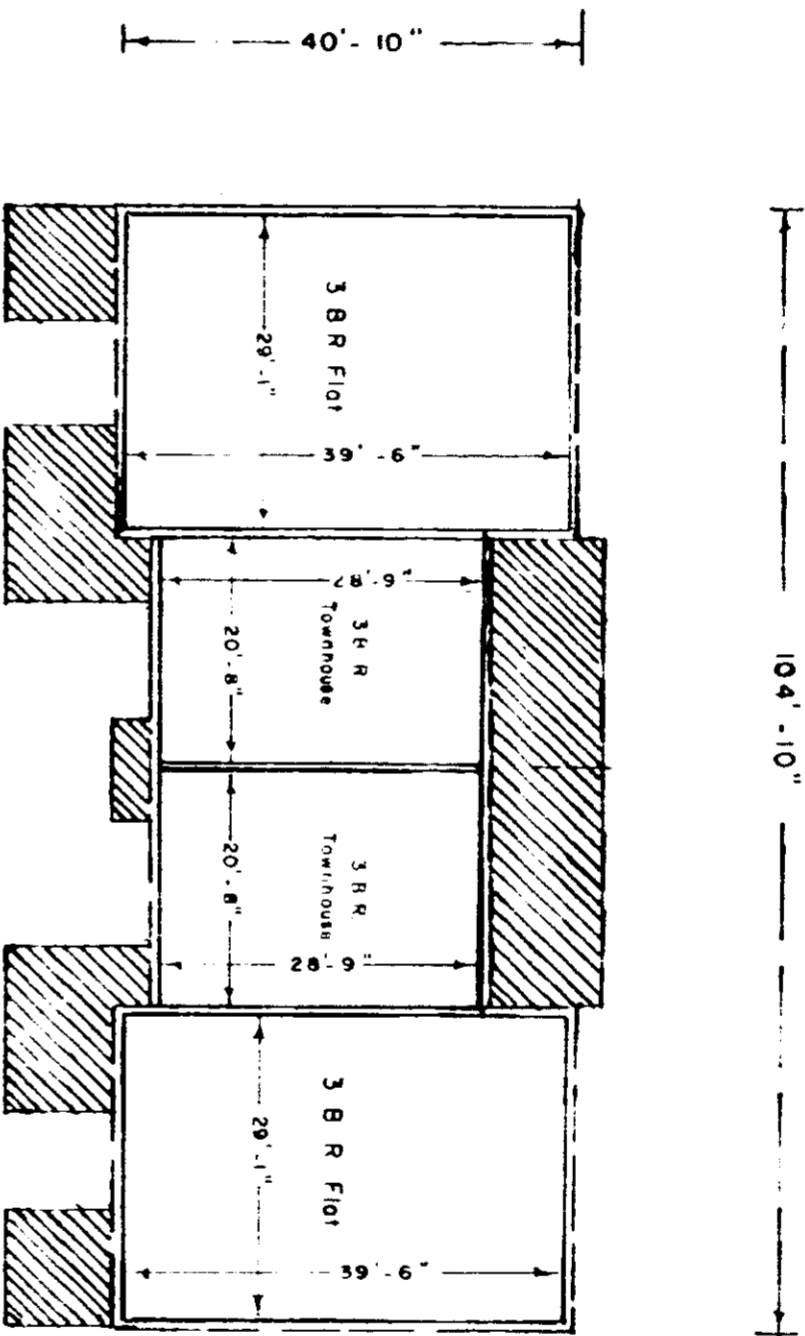


This is to certify that this is a Typical Unit for all buildings in Bridgeview II Horizontal Property Regime.

R.W. Dalton
S.C. Reg. No. 916



Boundary of unit ———
Common Elements ———
Limited Common Elements [hatched pattern]

SECOND FLOOR

TYPICAL UNIT SCHEMATIC OF

BRIDGEVIEW II HORIZONTAL PROPERTY REGIME

Scale 1" = 20' July, 1974 Dalton & Neves Co., Engineers

Notes:

1. The buildings shown in this plan consist of two three-bedroom flats and two three-bedroom townhouses with typical units shown above.
2. Each unit consists of the space bounded by the undercoated and/or Unfinished surfaces of the perimeter walls, floors, and ceilings
3. All interior angles are 90°

