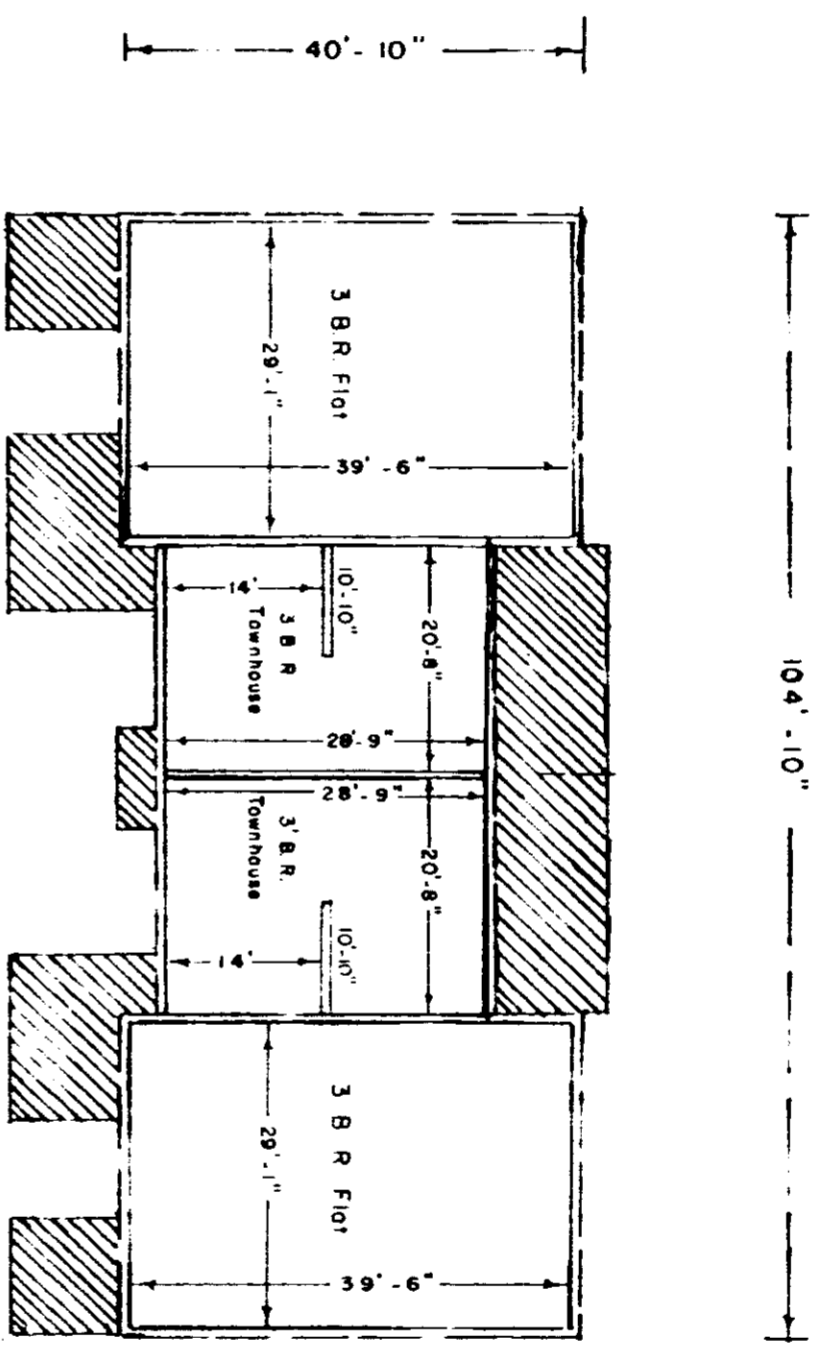


This is to certify that this is a Typical Unit for all buildings in Bridgeview II Horizontal Property Regime.

*R. W. Dalton*  
S. C. Reg. No. 916



Boundary of unit ———  
 Common Elements ———  
 Limited Common Elements

FIRST FLOOR  
TYPICAL UNIT SCHEMATIC OF

BRIDGEVIEW II HORIZONTAL PROPERTY REGIME

Scale 1" = 20' July, 1974 Dalton & Neves Co., Engineers

- Notes:
1. The buildings shown in this plan consist of two three-bedroom flats and two three-bedroom townhouses with typical units shown above.
  2. Each unit consists of the space bounded by the undercoated and/or Unfinished surfaces of the perimeter walls, floors, and ceilings.
  3. All interior angles are 90°

EXHIBIT B  
Sheet 2 of 3

