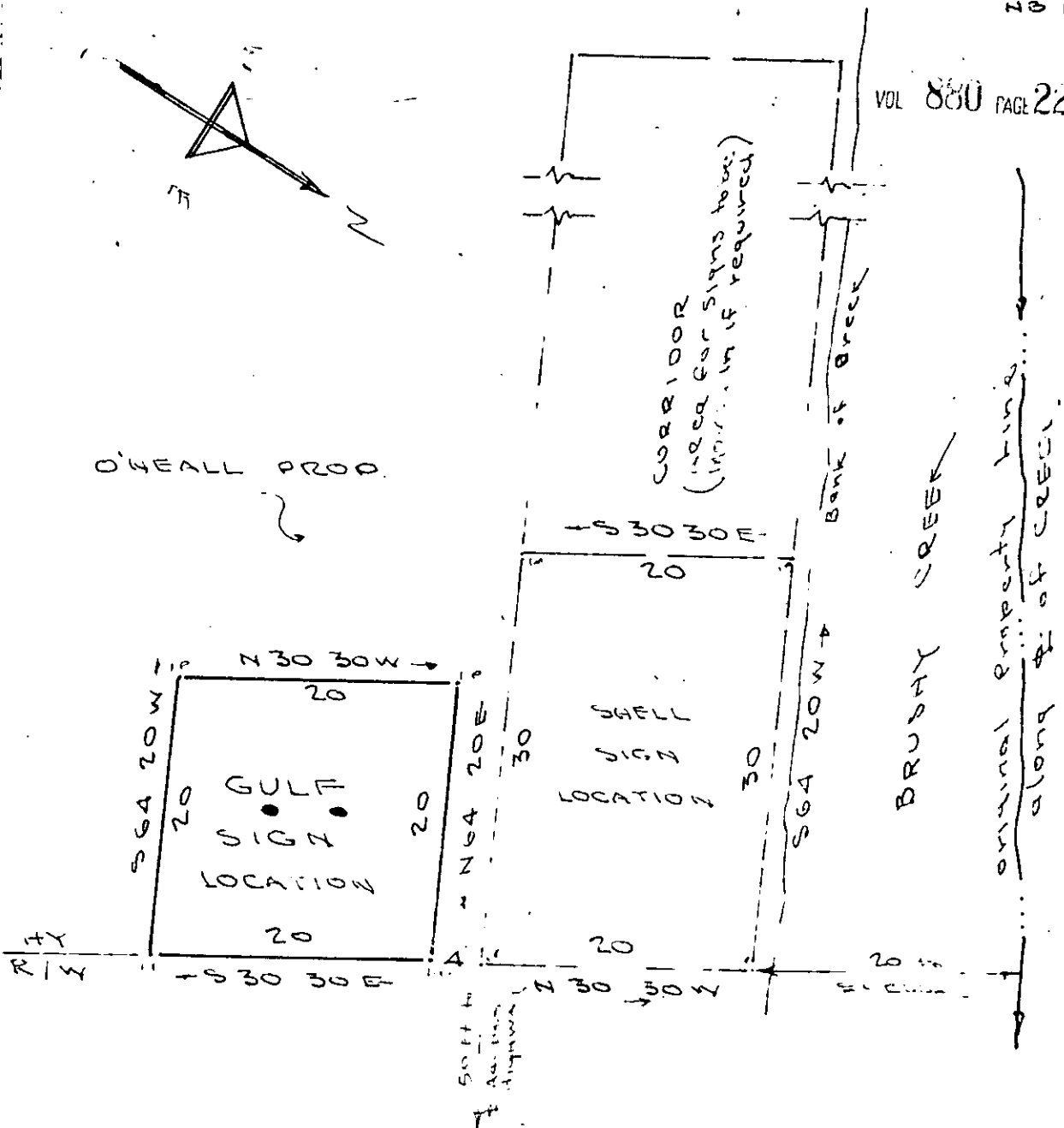


O'NEALL PROP.

CORRIDOR  
(used for signs to be  
installed if required)



SIGN SITE  
AT  
I-85 & U.S 25 INTERCHANGE  
GREENVILLE, S.C.  
Scale 1" = 10' MAY 15 1968  
GULF OIL CORP.

Recorded December 2, 1969 At 11:19 A.M. # 12637

JONES ENGINEERING SERVICES - GREENVILLE, S.C.