

255° 27' E 200.0' ... 576° 30' E 200.0' ... 570° 20' E 200.0' ... 505° 57' E 200.0'

GRASS SERVICE AREA DRIVE

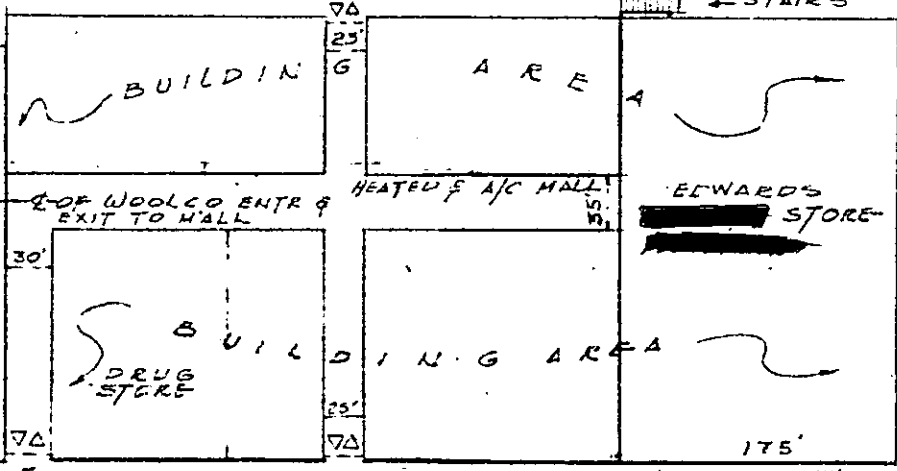
UPPER LEVEL PARKING AREA

TO BE TEMPORARELY PAVED FOR PARKING

RETAINING WALL

FUTURE BUILDING AREA

STAIRS



FUTURE BUILDING AREA LOWER LEVEL

LOWER LEVEL PARKING AREA

RETAINING WALL

30' FUTURE BUILDING AREA BANK

FUTURE BUILDING AREA SERVICE STATION 1 Story

LANDSCAPED PLANTING AREA

N 85° 33' W 385.55'

UNIVERSITY RIDGE (AS RELOCATED)

SHOPPING CENTER ... ED TO AND MADE A ... BETWEEN ... AND ... AND

NOTE: ENTRANCES AND EXITS TO BE NOT LESS THAN 30" IN WIDTH ... 74" = ENTRS. & EXITS TO MALL

(CONTINUED ON NEXT PAGE)

Reco