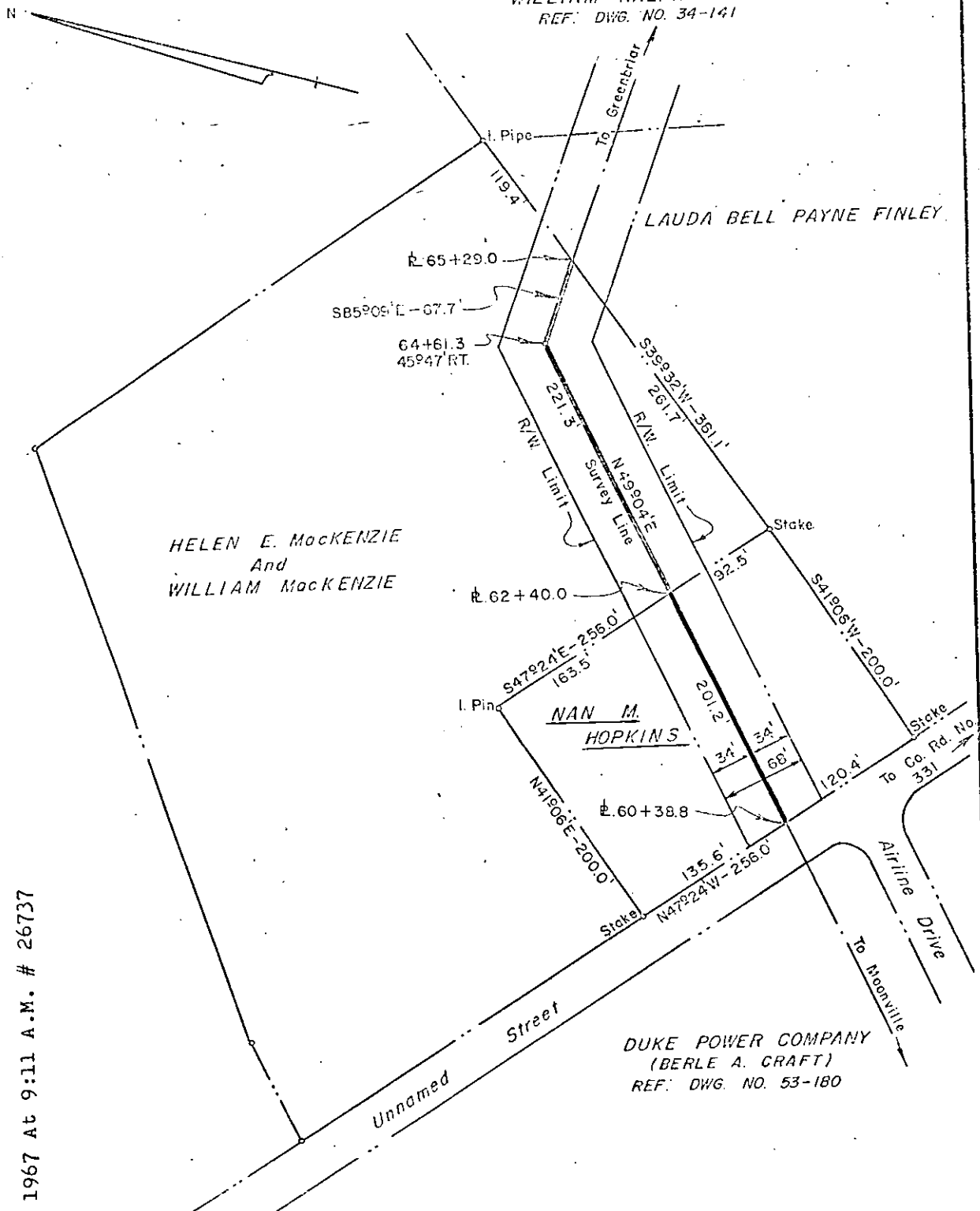


WILLIAM RALPH PAYNE
REF. DWG. NO. 34-141



DUKE POWER COMPANY
(BERLE A. CRAFT)
REF. DWG. NO. 53-180

DUKE POWER COMPANY
MOONVILLE - GREENBRIAR
TRANSMISSION LINE
CROSSING PROPERTY OF
NAN M. HOPKINS

AND
HELEN E. MACKENZIE AND WILLIAM MACKENZIE
Near CONESTEE, S. C.
GANTT TOWNSHIP
GREENVILLE COUNTY

SCALE: 1" = 100' DEC. 21, 1966
BOOK NO. 832 FILE NO. 34-150

Recorded May 4th., 1967 At 9:11 A.M. # 26737