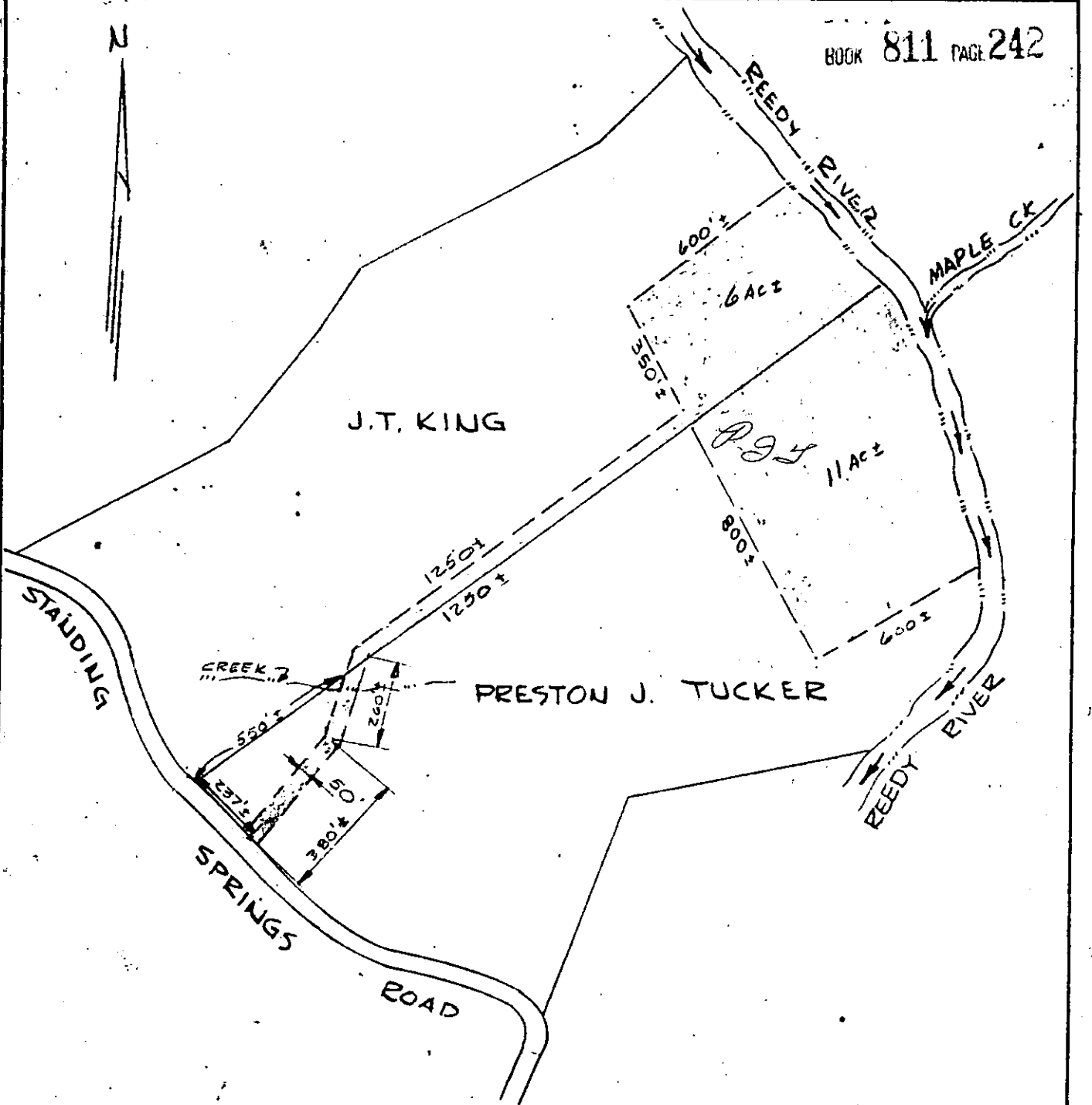


N



# MAPLE CREEK PLANT SITE

## TOWN OF MAULDIN

SCALE 1"=400'

OCT. 18, 1966



PIEDMONT ENGINEERS AND ARCHITECTS  
GREENVILLE, S. C.

Recorded December 29th., 1966 At 4:48 P.M. # 15793

538.1-1-5 & 6