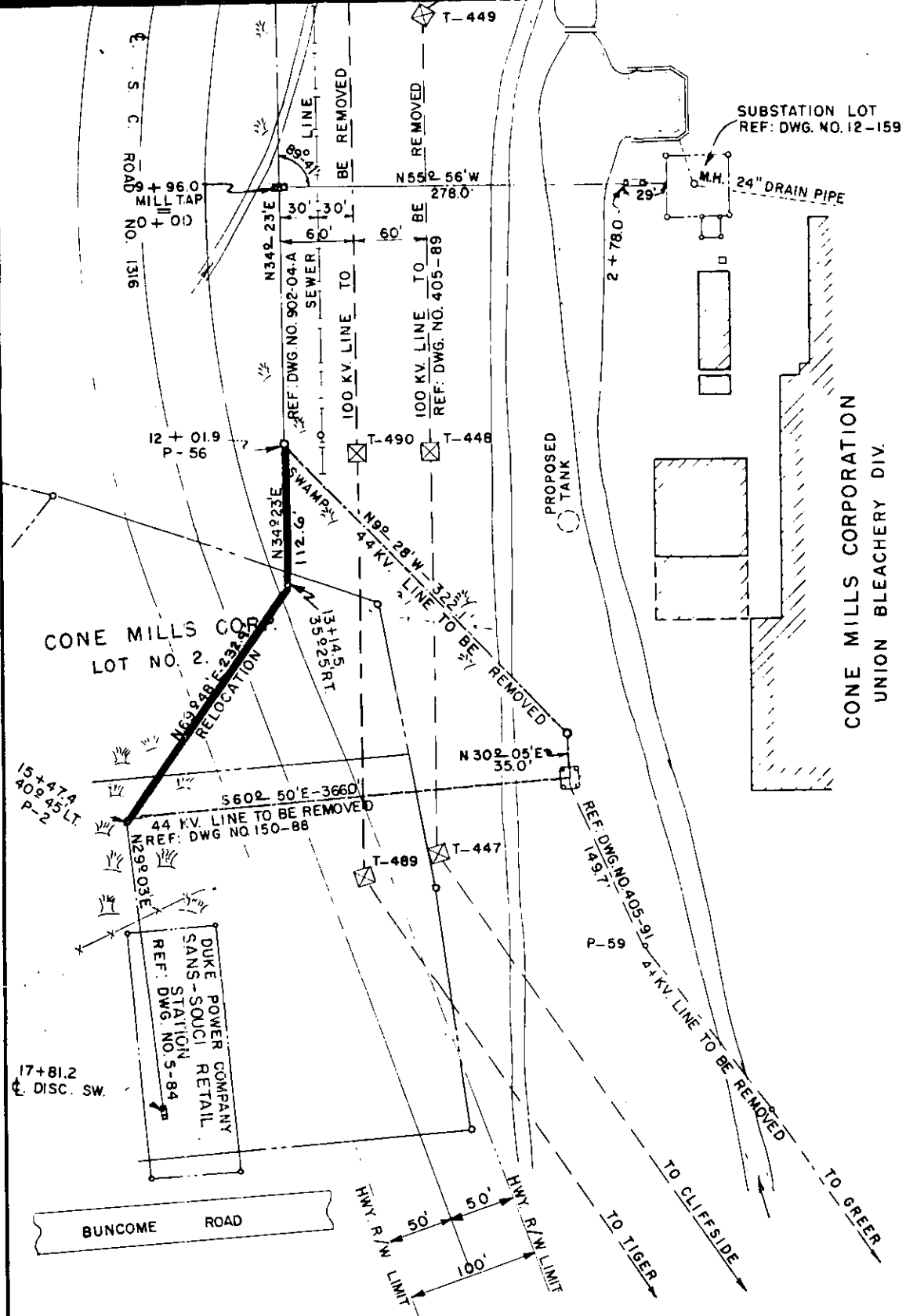


BOOK 748 PAGE 52



NOTE: REVISED: 1-17-64

DUKE POWER COMPANY
 RELOCATION OF
 SANS-SOU CI 44KV. LINE
 AT CONE MILLS CORP.
 UNION BLEACHERY DIVISION

Recorded May 15, 1964 At 2:43 P.M. GREENVILLE, SC.

32414

SCALE: 1" = 100'
BOOK NO. 466 B 741

DEC. 11, 1956
FILE NO. 52-129