

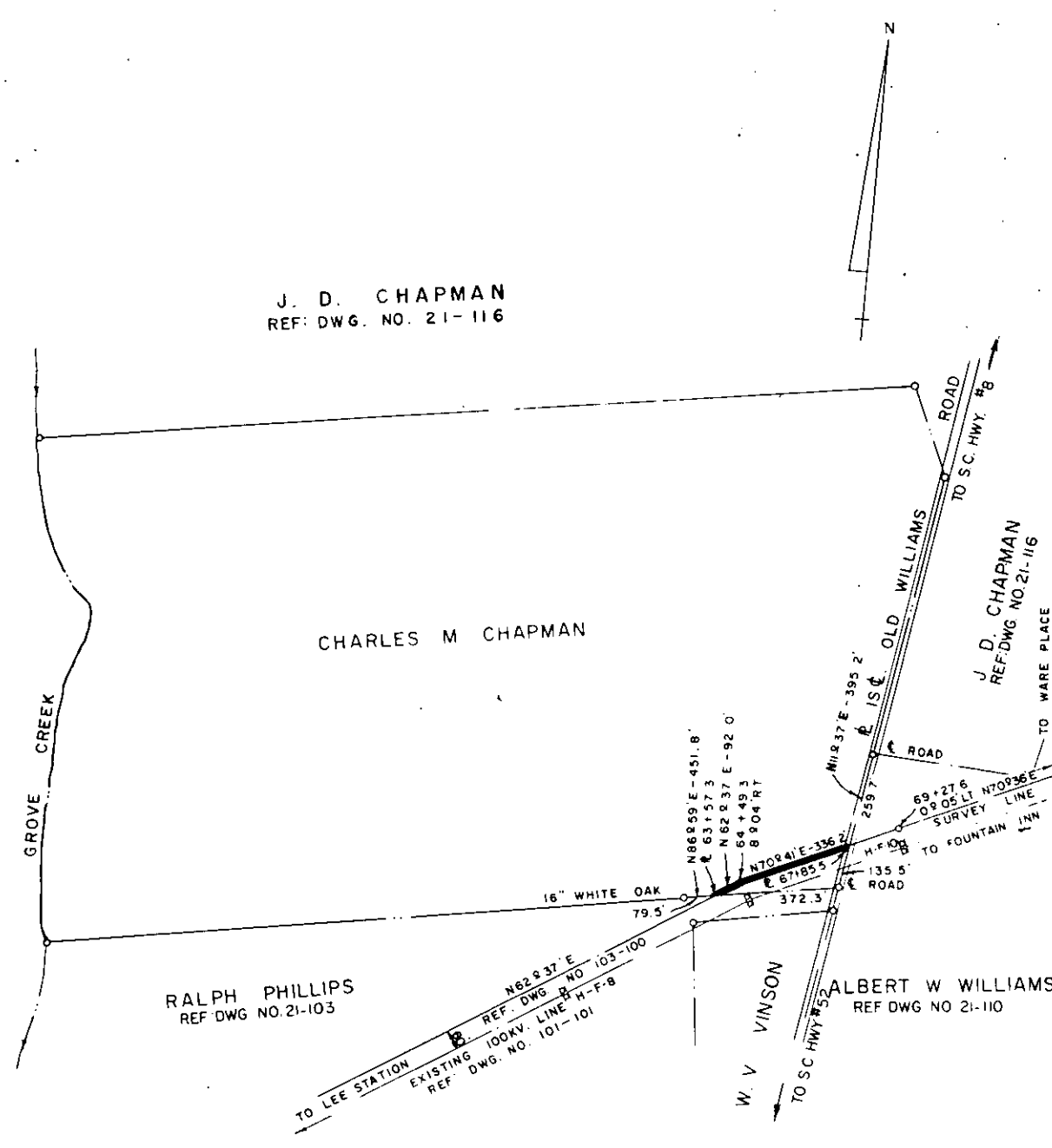
J. D. CHAPMAN  
REF: DWG. NO. 21-116

CHARLES M CHAPMAN

RALPH PHILLIPS  
REF: DWG. NO. 21-103

J. D. CHAPMAN  
REF: DWG. NO. 21-116  
TO WARE PLACE

ALBERT W WILLIAMS  
REF: DWG. NO. 21-110



#5861

DUKE POWER COMPANY  
LEE STATION - WARE PLACE  
TRANSMISSION LINE  
CROSSING PROPERTY OF  
CHARLES M CHAPMAN  
OAKLAWN TOWNSHIP  
GREENVILLE COUNTY, S. C.

Recorded this 22nd day of August, 1963, at  
4:33 P.M., No. 5861.

SCALE 1" = 400'  
BOOK NO 689

FEBRUARY 12, 1963  
FILE NO 21-109