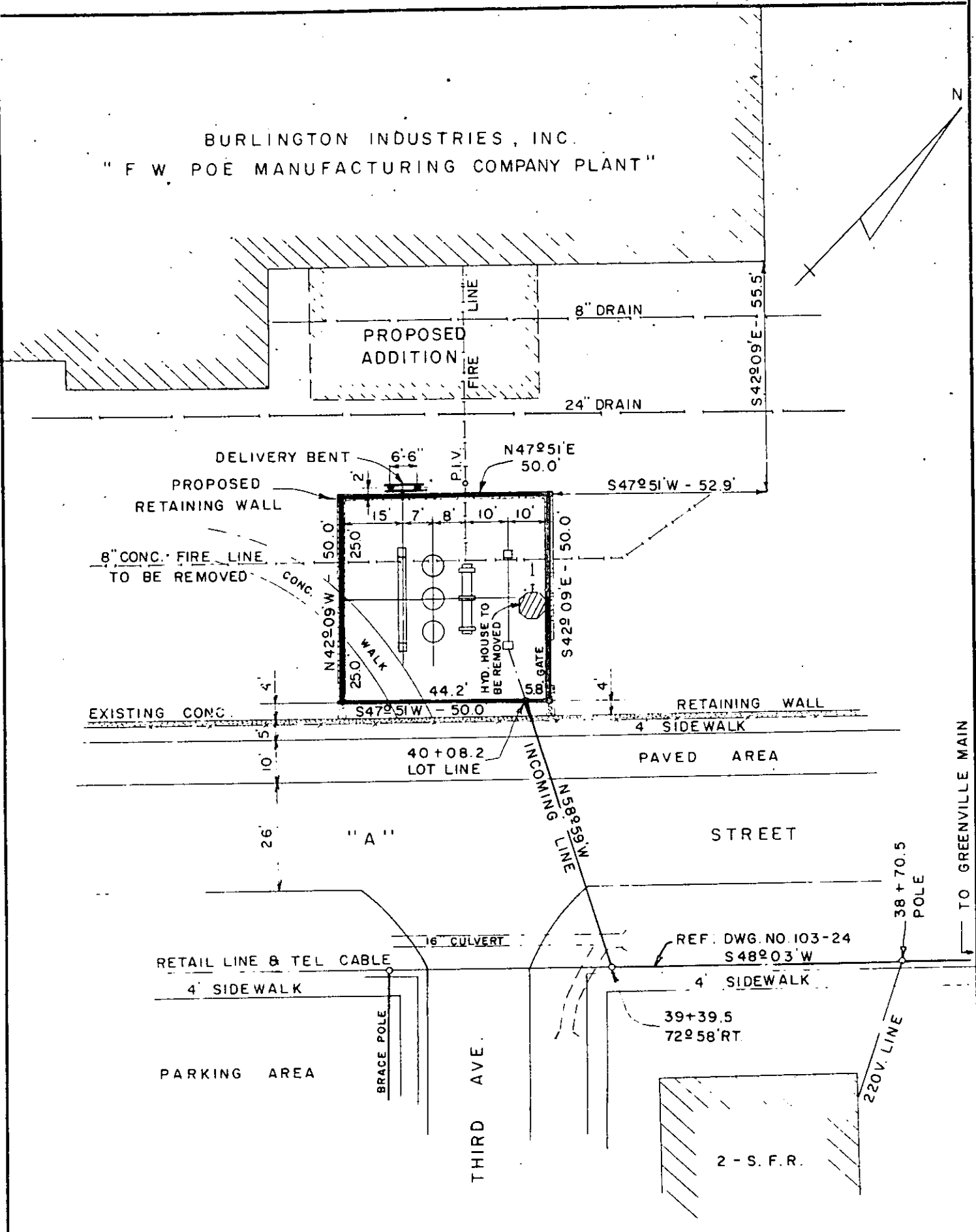


BURLINGTON INDUSTRIES, INC.
" F W POE MANUFACTURING COMPANY PLANT "



DUKE POWER COMPANY
SUBSTATION LOT NO.2
AND
TAP LINE
TO SERVE
BURLINGTON INDUSTRIES, INC.
" F. W. POE MANUFACTURING COMPANY PLANT "
GREENVILLE, S.C.
GREENVILLE COUNTY

SCALE: 1" = 30'
BOOK NO. 625

DECEMBER 6, 1961
FILE NO. 19-113

Recorded January 16th, 1962 at 9:45 A.M. #17586