

WITNESS Our hands and seals this 28 day of March, 1958.

WITNESSES:

Evelyn L. Worley  
W. H. Stokes  
As to Charles A. Stokes

Charles A. Stokes (SEAL) ✓  
Charles A. Stokes

Ernest J. Ferguson  
Stewart M. Barward  
As to Lydia McA. Christman

Lydia M. McA. Christman (SEAL) ✓  
Lydia McA. Christman

J. J. Lynch  
James J. Dancy  
As to Mary McA. Apperson

Mary McA. Apperson (SEAL) ✓  
Mary McA. Apperson  
Paul A. Fleury, IV (SEAL) ✓  
Paul A. Fleury, IV

W. J. Schaefer  
W. J. Schaefer  
As to Paul A. Fleury, IV

William E. Fleury (SEAL) ✓  
William E. Fleury

Margaret L. Cox  
Theodore Niss  
As to William E. Fleury

Charles M. Fleury (SEAL) ✓  
Charles M. Fleury

John J. McAllister  
George E. Clayton

Paul A. Fleury, III (SEAL) ✓  
Paul A. Fleury, III

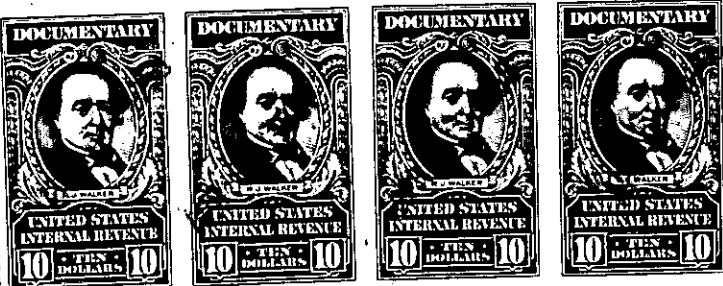
As to Charles M. Fleury,  
Paul A. Fleury, III,  
Mary Virginia Fleury Emory,  
Alexander A. Fleury,  
Lewis L. Fleury, and  
Esther C. Fleury Imhoff.

Mary Virginia Fleury Emory (SEAL) ✓  
Mary Virginia Fleury Emory

Alexander A. Fleury (SEAL) ✓  
Alexander A. Fleury

Lewis L. Fleury (SEAL) ✓  
Lewis L. Fleury

Esther C. Fleury Imhoff (SEAL) ✓  
Esther C. Fleury Imhoff



CONSENTED TO AND APPROVED:

Lewis L. Fleury (SEAL)  
Lewis L. Fleury, Executor of the  
Estate of Esther McA. Fleury.

(Continued on next page)