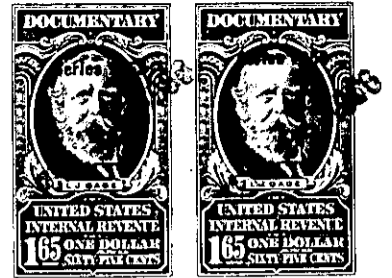


THE STATE OF SOUTH CAROLINA, }
 COUNTY OF Greenville

FILED
 GREENVILLE CO. S. C.

FEB 29 3 05 PM 1896

OLLIE FARNSWORTH
 - R. M. C.



KNOW ALL MEN BY THESE PRESENTS, That . . . I, WINNIE BELL LINDSEY . . .

in the State aforesaid, in consideration of the sum of . . . Three Thousand two hundred and no/100
 . . . (\$3,200.00) . . . Dollars

to . . . me . . . in hand paid at and before the sealing of these presents
 by . . . THE CITY OF GREENVILLE, S. C. . . .

(the receipt whereof is hereby acknowledged), have granted, bargained, sold and released, and by these
 presents do grant, bargain, sell and release unto the said . . . THE CITY OF GREENVILLE, S. C.,
 its successors and assigns, forever:

ALL those three pieces, parcels or lots of land in Glassy Mountain Town-
 ship, Greenville County, S. C., described as follows:

Tract No. 1 situate, lying and being on branch waters of South Pacolet
 River and North fork of Saluda River and having the following metes and
 bounds:

BEGINNING on a Hodge Rock and running nearly due East a conditional line
 between Dill and Lindsey to a rock conditional corner; thence nearly
 Southeast to a blackgum, conditional corner; thence nearly due South to
 the old line to a white oak with a large knot at the ground or near to or
 to the old line to a stake; thence N. $58\frac{1}{2}$ E. 7.80 to a Spanish oak; thence
 N. 33 E. 9.50 to a chestnut; thence N. 60 E. 70 lengths to a stake on
 Jacob Lindsey's line; thence N. 77 W. 42 chains to a stake; thence S. 15
 W. 4.25 to a rock; thence S. 62 W. 12.50 to a chestnut; thence S. 19 W.
 7.00 to a hickory; thence S. 39 E. 5.60 to beginning Hodge Rock corner,
 containing $90\frac{1}{2}$ acres, more or less.

Tract No. 2 situate, lying and being on waters of Fall Creek and South
 Pacolet River and having, the following metes and bounds:

BEGINNING on a rock corner near the James Gosnell old house; thence nearly
 East to a hickory on a large rock; thence nearly due East to a white oak;
 thence nearly Northeast to a white oak; thence nearly Northeast to a
 marked white oak till it strikes the old line; thence down the old line till
 it strikes a large white oak with a large knot at the ground; thence a
 conditional line made between Joshua Pitman and James Lindsey to a black-
 gum; thence nearly West with James Lindsey line to the beginning rock
 corner, containing 45 acres more or less.

Tract No. 3 situate, lying and being on head waters of South Pacolet River
 and having the following metes and bounds:

BEGINNING on a maple on the big branch; thence nearly North to a white oak
 station; thence to a chestnut; thence to a poplar to the corner to a stake
 on James Lindsey's line; thence with James Lindsey's line to a hickory;
 thence to a double chestnut; thence to a locust; thence with Joshua Lindsey's
 line to the branch to a stake; thence down the branch to the beginning
 maple corner.

The three tracts of land herein described are the same conveyed to me by
 deed of my husband, W. T. Lindsey by deed executed on the 22nd day of
 December, 1921, and recorded in the R.M.C. Office for Greenville County,