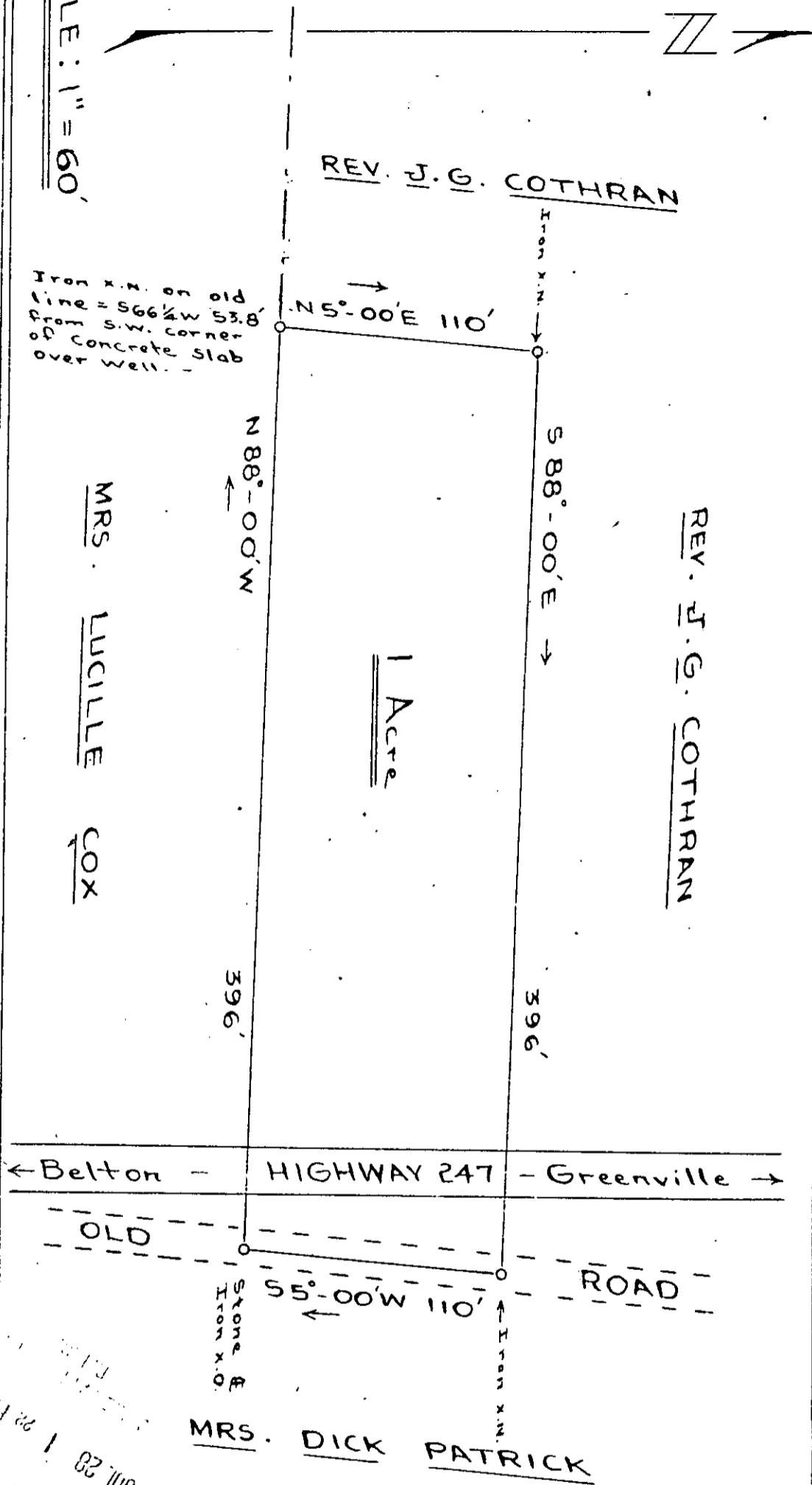


PARSONAGE LOT = CEDAR SHOALS BAPTIST CHURCH



SCALE: 1" = 60'

110' N 5°-00' E
 396' S 88°-00' E
 396' N 88°-00' W
 110' S 55°-00' W
 Iron x.m.
 Stone & Iron x.o.
 old
 corner
 concrete slab
 set
 well

South Carolina
 Greenville County
 Lot of land located on Highway 247, approx. 1/2 miles north of Saluda River (Cooley's Bridge). - Said lot contains One Acre and conveyed to Cedar Shoals Baptist Church from Rev. J. G. Cotheran. -

T. J. Leslie, Rec. Surveyor
 B. F. E. Ragsdale, Asst.
 July 3, 1953

1657 211
 JUL 28 1953

For Deed in connection with this Plat See Deed Book 482, pg 417
 Recorded July 28th, 1953 at 1:22 P.M. #16779