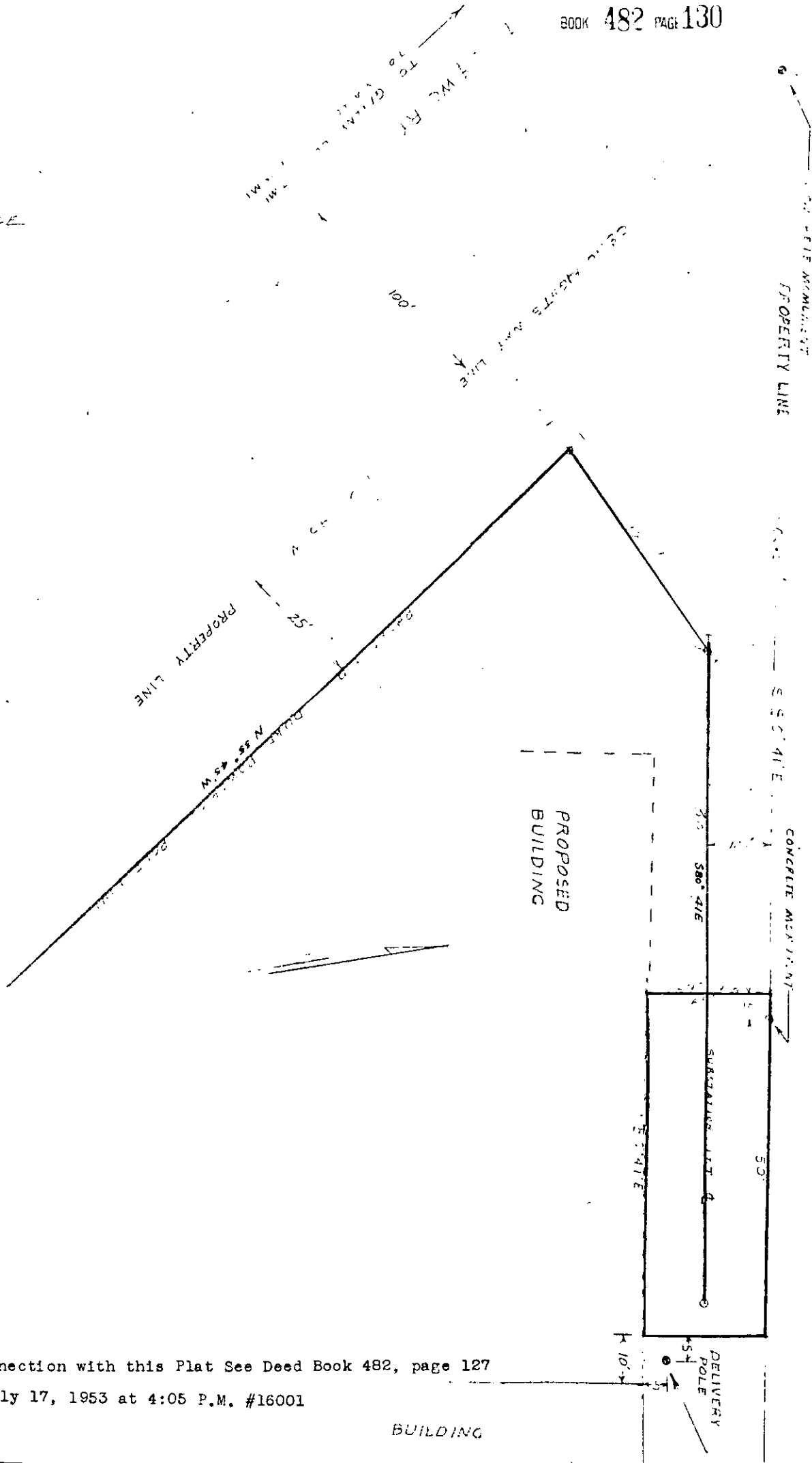


COUNTY - GREENVILLE  
TOWNSHIP - HUSTON  
SCHOOL DIST. - 520  
LOCATED ON HWY 276



DUKE POWER COMPANY  
SUBSTATION LOT  
LEASED FROM  
HER MASTER'S OVERPOWER INC. CO.  
FOR  
RETAIL DISTRIBUTION  
GREENVILLE, S.C.

SCALE: AS NOTED  
JULY 1, 1953

For R/W in connection with this Plat See Deed Book 482, page 127  
Recorded July 17, 1953 at 4:05 P.M. #16001

BUILDING