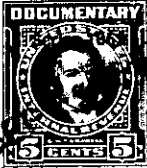




THE STATE OF SOUTH CAROLINA,
COUNTY OF GREENVILLE

For True Consideration See Affidavit
Book 15 Page 164



KNOW ALL MEN BY THESE PRESENTS, That I, Martha L. Hawkins

in the State aforesaid, in consideration of the sum of Ten Dollars (\$10.00) and other valuable consideration

to me in hand paid at and before the sealing of these presents by Hugh O. Padrick, Jr.

(the receipt whereof is hereby acknowledged), have granted, bargained, sold and released, and by these presents do grant, bargain, sell and release unto the said Hugh O. Padrick, Jr.

all that piece, parcel or lot of land in Saluda Township,

County, State of South Carolina and being on the western side of U. S. Highway No. 25 and being a portion of what was formerly known as Wildwood Park. The said lands contain and include 446 acres, more or less, in accord with a plat made by Tom Justice, Surveyor, dated July 20, 1946. The Justice plat covers 675 acres, but there are numerous exceptions and conveyances away. The land here conveyed is more particularly described as follows:

BEGINNING at a point on the western side of U. S. Highway #25 at the north end of a culvert at the intersection of a dirt road and the highway at the corner of other lands of the grantor, running thence with the western side of said highway the following courses and distances: N. 3-05 W. 543 feet; N. 9-15 E. 211 feet; N. 25 E. 95 feet; N. 27-30 E. 683 feet; N. 16-10 E. 211 feet; N. 1-25 W. 104 feet; N. 7-15 W. 86 feet; N. 13 E. 280 feet; N. 30-10 E. 812 feet; N. 29-50 E. 772 feet; N. 19-25 E. 190 feet; N. 0-30 W. 163 feet; N. 12-10 W. 130 feet; N. 3-40 E. 296 feet; N. 34-30 E. 146 feet; N. 39-15 E. 509 feet; N. 26-25 E. 183 feet; N. 1-30 E. 181 feet; N. 26-50 W. 205 feet; N. 53 W. 199 feet; N. 59-55 W. 336 feet; N. 3 W. 235 feet to the corner of property formerly conveyed to Gladys Hawkins at the intersection of a new road and U. S. Highway # 25; thence leaving the highway and running with the Gladys Hawkins line along the center of the new road the following courses and distances: N. 30 W. 200 feet; N. 85 W. 145 feet; S. 79 W. 169 feet; N. 84-45 W. 168 feet; N. 41-30 W. 100 feet; N. 71 W. 132 feet; N. 39-15 W. 88 feet; S. 71-15 W. 63 feet; S. 59 W. 50 feet; S. 86 W. 221 feet; S. 79-30 W. 400 feet; N. 54 W. 210 feet; N. 32-45 W. 181 feet; N. 70 W. 190 feet to the Cleveland line; thence with said line S. 76-30 W. 565 feet; thence N. 24 W. 50 feet; thence N. 20 E. 505 feet; thence N. 86-W. 1420 feet; thence S. 40 W. 710 feet; thence S. 38 W. 97 feet; thence S. 26 E. 50 feet; thence S. 30 W. 50 feet; thence S. 6 E. 100 feet; thence S. 25 E. 185 feet; thence S. 33 E. 100 feet; thence S. 61 E. 150 feet; thence S. 60 E. 107 feet; thence S. 47 E. 200 feet; thence S. 38 E. 100 feet; thence S. 40 E. 200 feet; thence S. 13 E. 530 feet; thence S. 7 E. 225 feet; thence S. 3 E. 247 feet; thence S. 4 E. 1475 feet; thence S. 27 W. 310 feet; thence S. 4 E. 190 feet; thence S. 3 W. 410 feet; thence S. 28 E. 860 feet; thence S. 66 E. 80 feet to a point on the creek; thence down the creek the following courses and distances: S. 9 E. 440 feet; S. 49 E. 400 feet; S. 57 E. 400 feet; S. 35 E. 335 feet; S. 34 E. 225 feet; S. 8 E. 400 feet; S. 35 E. 140 feet; thence leaving the creek N. 86 E. 100 feet to the beginning, containing 465 acres, more or less.

OVER