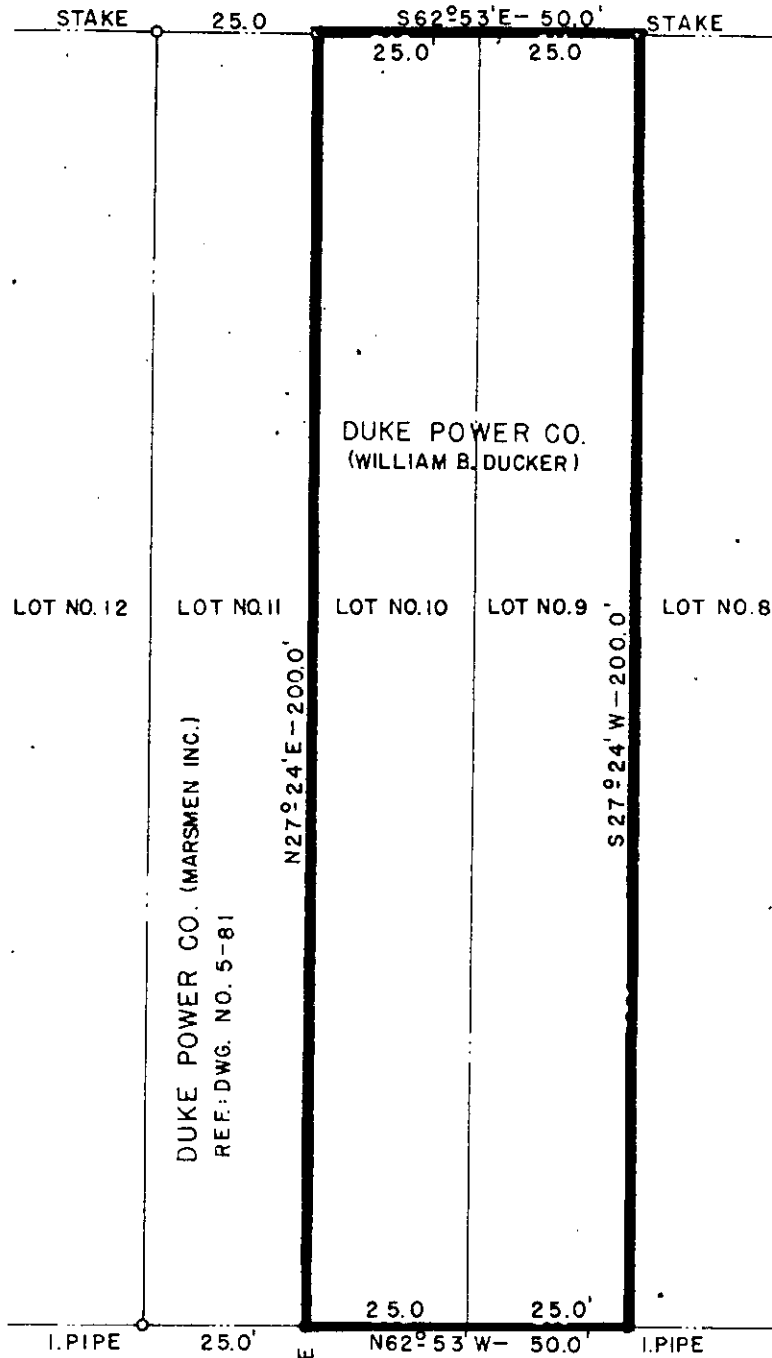
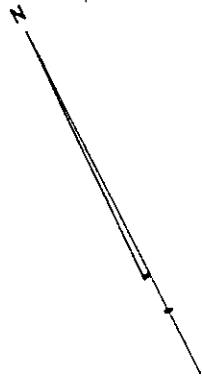


BUNCOMBE ROAD

TO GREENVILLE →

SIDEWALK



NOTE:
 PLOTTED FROM
 MAP MADE BY
 DALTON & NEVES, DATED
 MAY 1944, GREENVILLE, S.C.

REF:
 SEE PLAT BOOK O, PAGE 7
 GREENVILLE COUNTY REGISTRY

LOT NO. 3

JAN 10 1950

726 100

DUKE POWER COMPANY
 SUBSTATION LOT
 ACQUIRED FROM
 WILLIAM B. DUCKER
 GREENVILLE, S.C.

SCALE: 1" = 30' DEC. 16, 1949
 BOOK NO. 297 FILE NO. 5-82

Recorded January 10th. 1950 at 4:03 P. M. #726

For Deed in connection with this Plat See Page 511 in this Book.