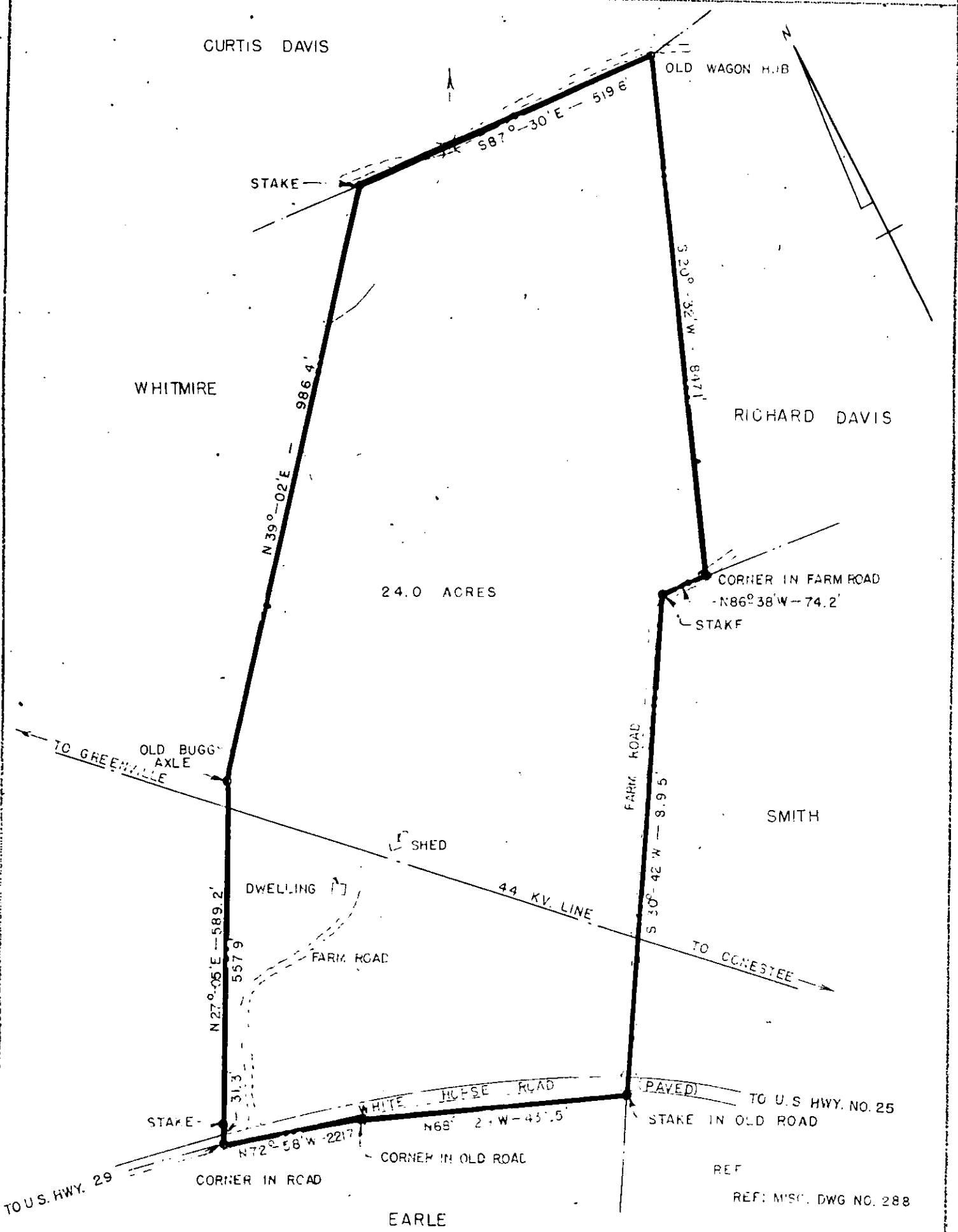


For Deed in connection with this Plat See Page 174 in this Book.



DUKE POWER COMPANY
 SUBSTATION LOT
 ACQUIRED FROM
 J. M. TRIPP
 NEAR GREENVILLE, S.C.

SCALE: 1" = 200'
 BOOK NO. 293
 DEC. 6, 1949
 FILE NO. 5-77

Recorded December 16th. 1949 at 12:50 P. M. #29699

REF
 REF: MISC. DWG NO. 288

100 DEC 10 1949

29699