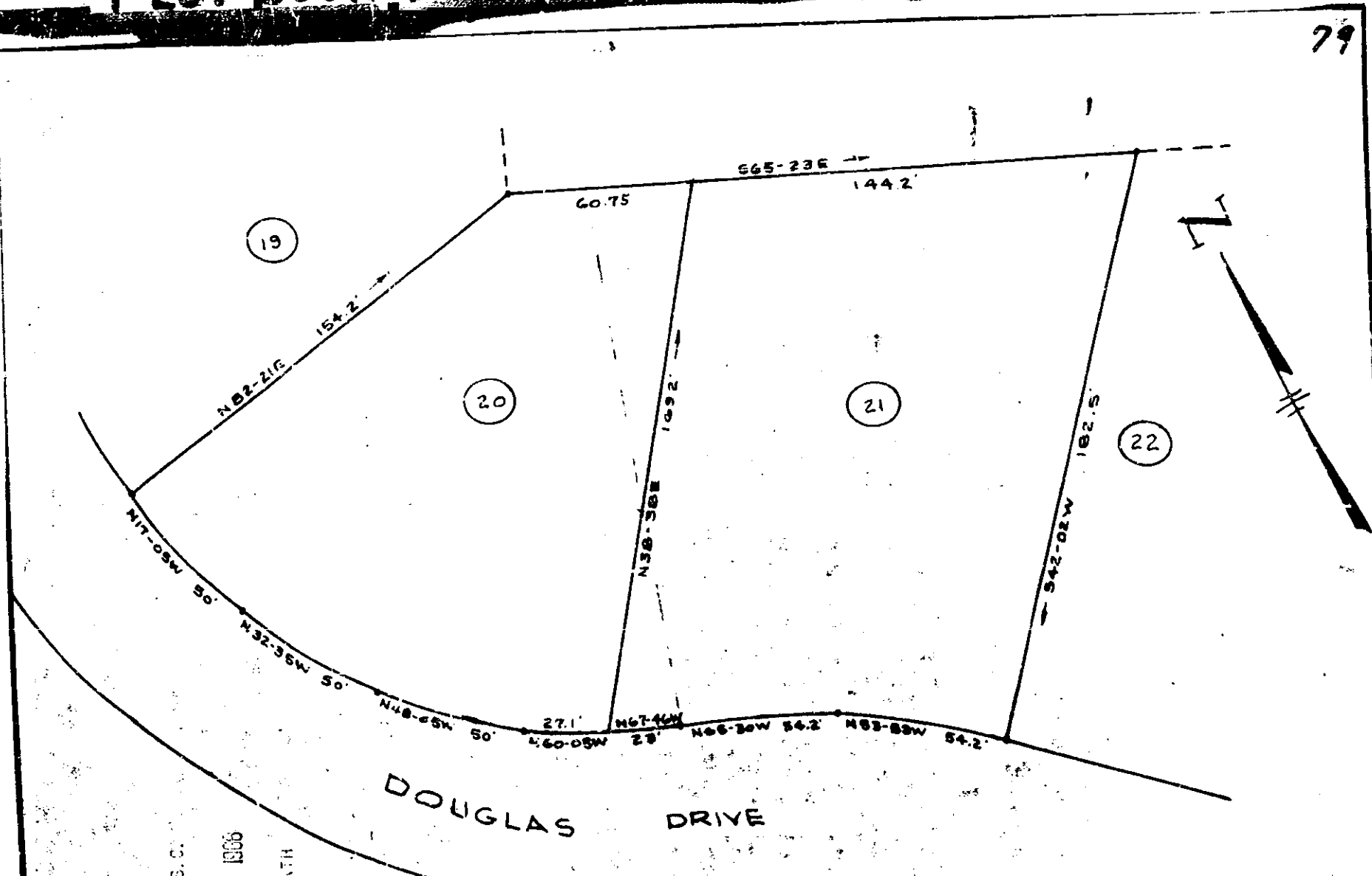


Plat Book-ZZZ-Page 79B

79



#12369 Plat This 20 day of Nov. 1966
 And Recorded in Vol. 222 Page 79 at 2:16 P.M.
 Olie Brumwell
 Register Messrs Conveyance Greenville County, S. C.

FILED
 GREENVILLE CO. S. C.
 NOV 20 2 16 PM 1966
 THE CLERK OF COURTS
 GREENVILLE, S. C.

12369

REVISED PLAT OF LOTS, 21+22
 MARTINDALE

NEAR SIMPSONVILLE, S. C.

SCALE 1"=40'

OCT. 11, 1966

C. E. Riddle R.L.S.

ZZZ-79