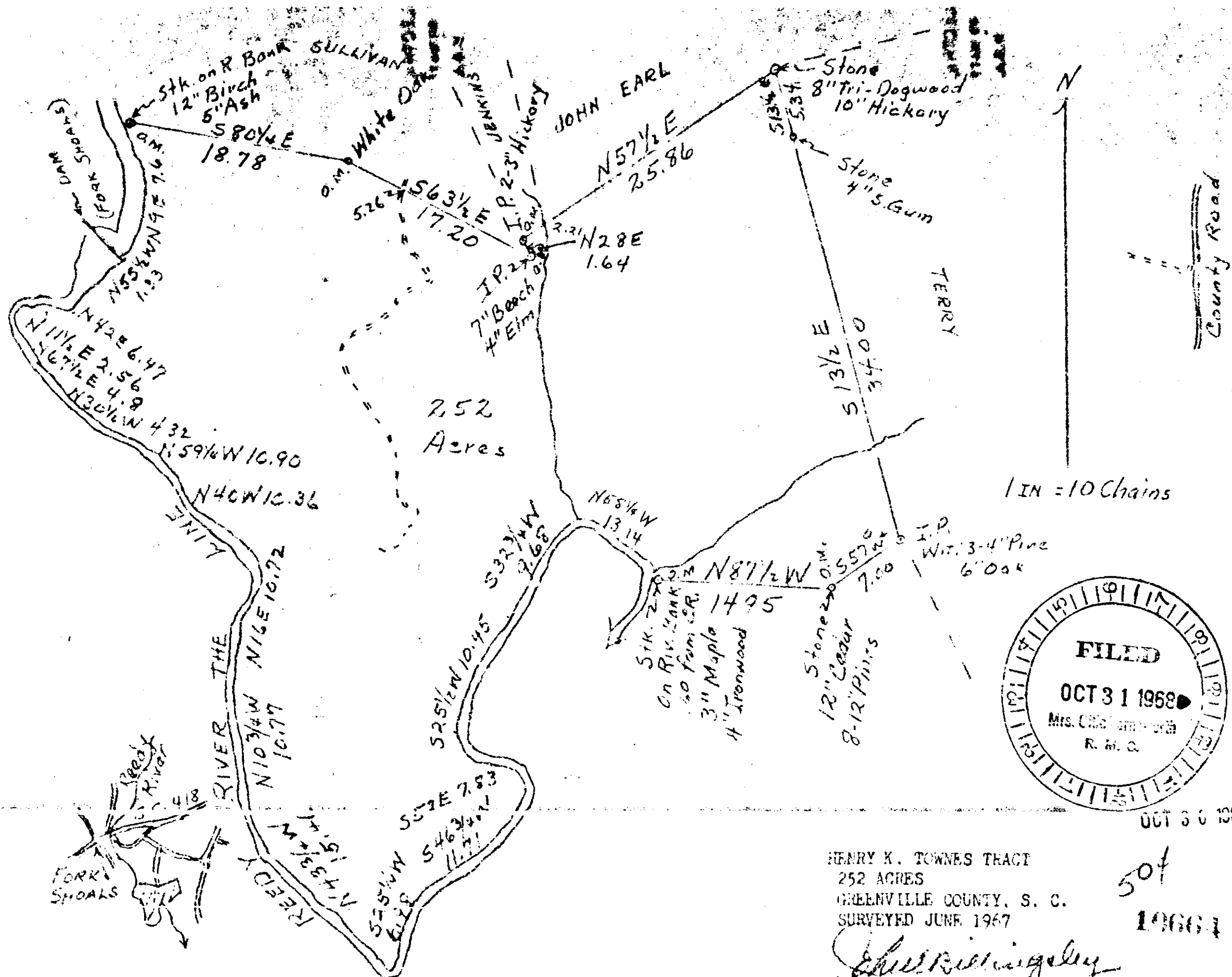


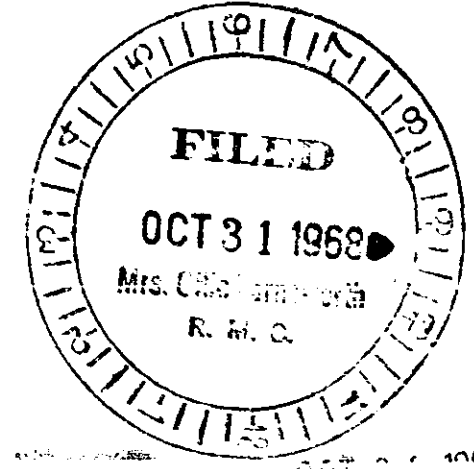
Plat Book-ZZZ-Page 47B

47



LOCATION SKETCH
1/2" = 1 Mile

ZZZ-47



HENRY K. TOWNES TRACT
252 ACRES
GREENVILLE COUNTY, S. C.
SURVEYED JUNE 1967

John C. Billingsley

JOHN C. BILLINGSLEY
R. L. S. #1161

#10664 Filed This 31 day of Oct. 1968
And Recorded in Vol. 317 Page 47 at 9:15 A.M.
John C. Billingsley
Register Mesne Conveyance: Greenville County, S. C.

OCT 30 1968
507
1968