

THIS TRAYING TO BE IMPROVED BY OTHER

TO BE FURNISHED - 45' BY 51'-0"



OLD MILL ROAD

DEPOSED ROAD

8" WATER LINE

TIP 71

TIP 72

TIP 73

TIP 74

TIP 75

TIP 76

TIP 77

TIP 78

TIP 79

TIP 80

TIP 81

TIP 82

TIP 83

TIP 84

TIP 85

TIP 86

TIP 87

TIP 88

TIP 89

TIP 90

TIP 91

TIP 92

TIP 93

TIP 94

TIP 95

TIP 96

TIP 97

TIP 98

TIP 99

TIP 100

TIP 101

TIP 102

TIP 103

TIP 104

TIP 105

TIP 106

TIP 107

TIP 108

TIP 109

TIP 110

TIP 111

TIP 112

TIP 113

TIP 114

TIP 115

TIP 116

TIP 117

TIP 118

TIP 119

TIP 120

TIP 121

TIP 122

TIP 123

TIP 124

TIP 125

TIP 126

TIP 127

TIP 128

TIP 129

TIP 130

TIP 131

TIP 132

TIP 133

TIP 134

TIP 135

TIP 136

TIP 137

TIP 138

TIP 139

TIP 140

TIP 141

TIP 142

TIP 143

TIP 144

TIP 145

TIP 146

TIP 147

TIP 148

TIP 149

TIP 150

TIP 151

TIP 152

TIP 153

TIP 154

TIP 155

TIP 156

TIP 157

TIP 158

TIP 159

TIP 160

TIP 161

TIP 162

TIP 163

TIP 164

TIP 165

TIP 166

TIP 167

TIP 168

TIP 169

TIP 170

TIP 171

TIP 172

TIP 173

TIP 174

TIP 175

TIP 176

TIP 177

TIP 178

TIP 179

210033 Final The L... of Hwy... in CT

RELOCATED ROAD 48'-25" ACROSS

TO EL 940

48'-18" ACROSS

48'-18" ACROSS

48'-18" ACROSS

78'-26" ACROSS

80'-6" ACROSS

SECTION

SECTION

SECTION

SECTION

SECTION

SECTION

SECTION

SECTION

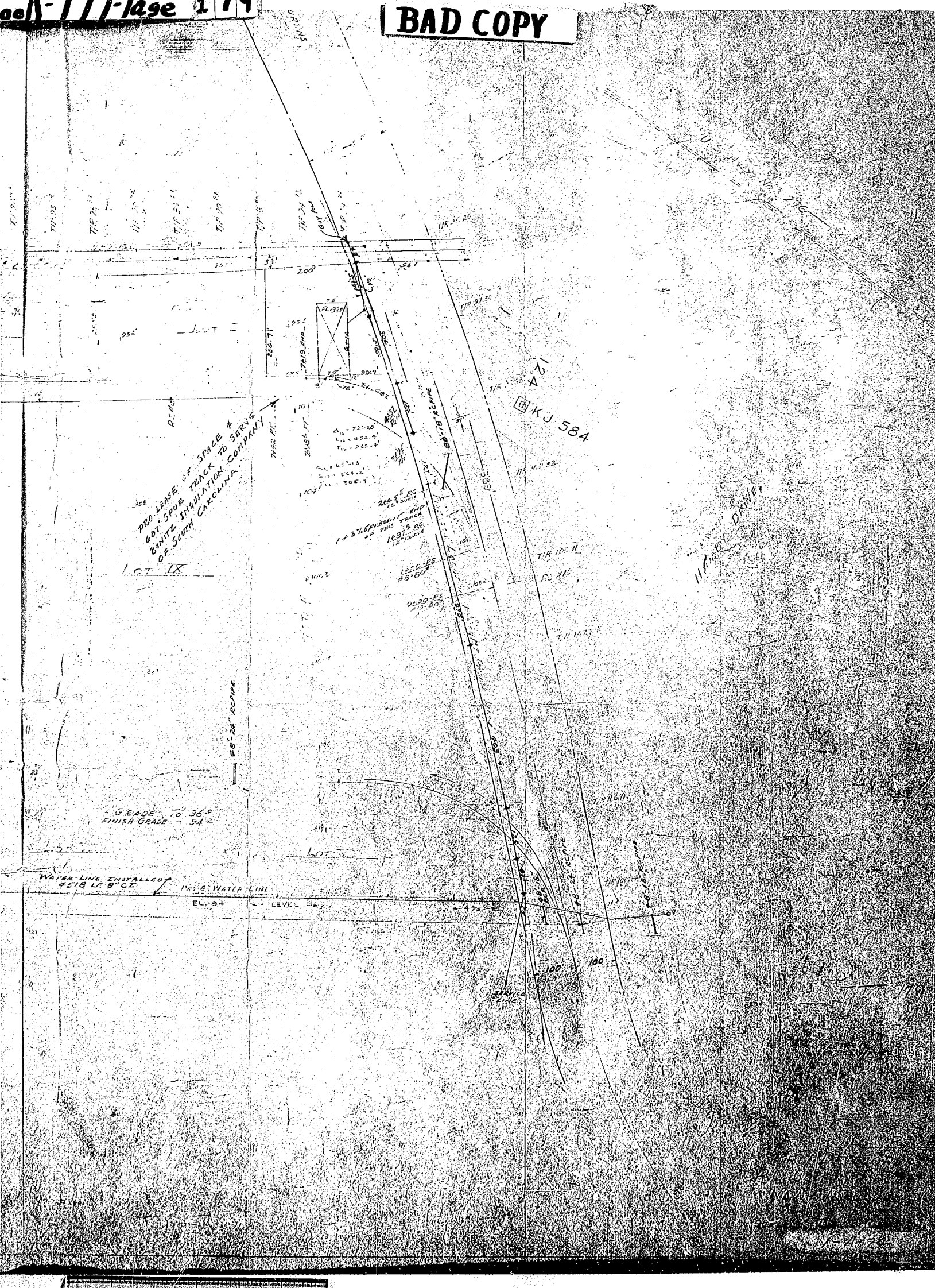
LOT 110

LOT 111

FOR... EL. 940

TO EL 940

**BAD COPY**



PROPOSED LEASE OF SPACE &  
 601' SPOB TRACK TO SERVING  
 BENTZ INNOVATION COMPANY  
 OF SOUTH CAROLINA

KJ 584

GRADE TO 36.0  
 FINISH GRADE - 34.2

WATER LINE INSTALLED  
 4518 LF 8" CI

PR. 2 WATER LINE  
 EL. 34

LOT

86' 24" RADIUS

TIR 105.11

R. 115

T.M. 107.14

110.100

86' 24" RADIUS

86' 24" RADIUS

100

100

Δ = 72.28  
 L = 452.9  
 T = 222.3

Δ = 65.18  
 L = 504.2  
 T = 205.9

1 + 3.7% REPRESENTS  
 2.0' FINISH GRADE  
 14.9' 8" RADIUS  
 12' CURVE

1250.25  
 43.60

2200.05  
 23.80

719.34  
 719.34  
 719.34  
 719.34  
 719.34

220.71  
 220.71  
 220.71  
 220.71

210.17  
 210.17  
 210.17

100.0  
 100.0  
 100.0

100.0  
 100.0  
 100.0

100.0  
 100.0  
 100.0

100.0  
 100.0  
 100.0

100.0  
 100.0  
 100.0