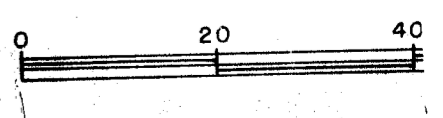
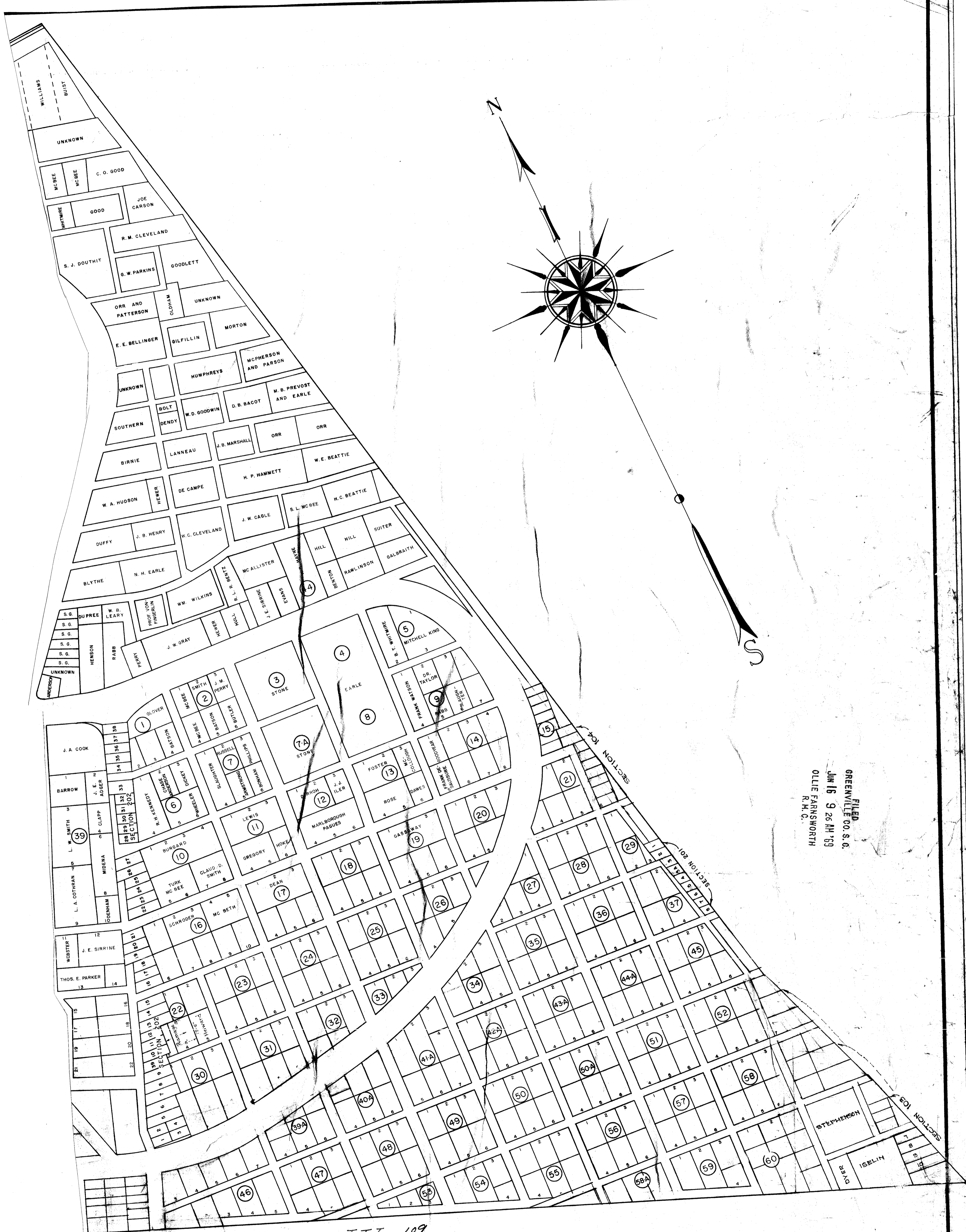


CHRIST

Revision and Addition to Map made February 1963
 Revision November 1964
 Revision Sect. 22 April 1965
 Addition to Map made December 1968
 Plat Revised May 1969



#30053 Filed This 16 day of June 19 1939 a.
And Recorded in Vol. 111 Page 109 at 9:26 AM
Ollie Farnsworth
Register Means Conveyances Greenville County, S. C.



FILED
GREENVILLE CO. S. C.
JUN 16 9 26 AM '39
OLLIE FARNSWORTH
R. H. C.

REVISED MAP OF CHURCH CEMETERY GREENVILLE, S. C.

30053



MARCH 1928

DALTON & NEVES ENGRS.
GREENVILLE, S. C.

777-109
6.00