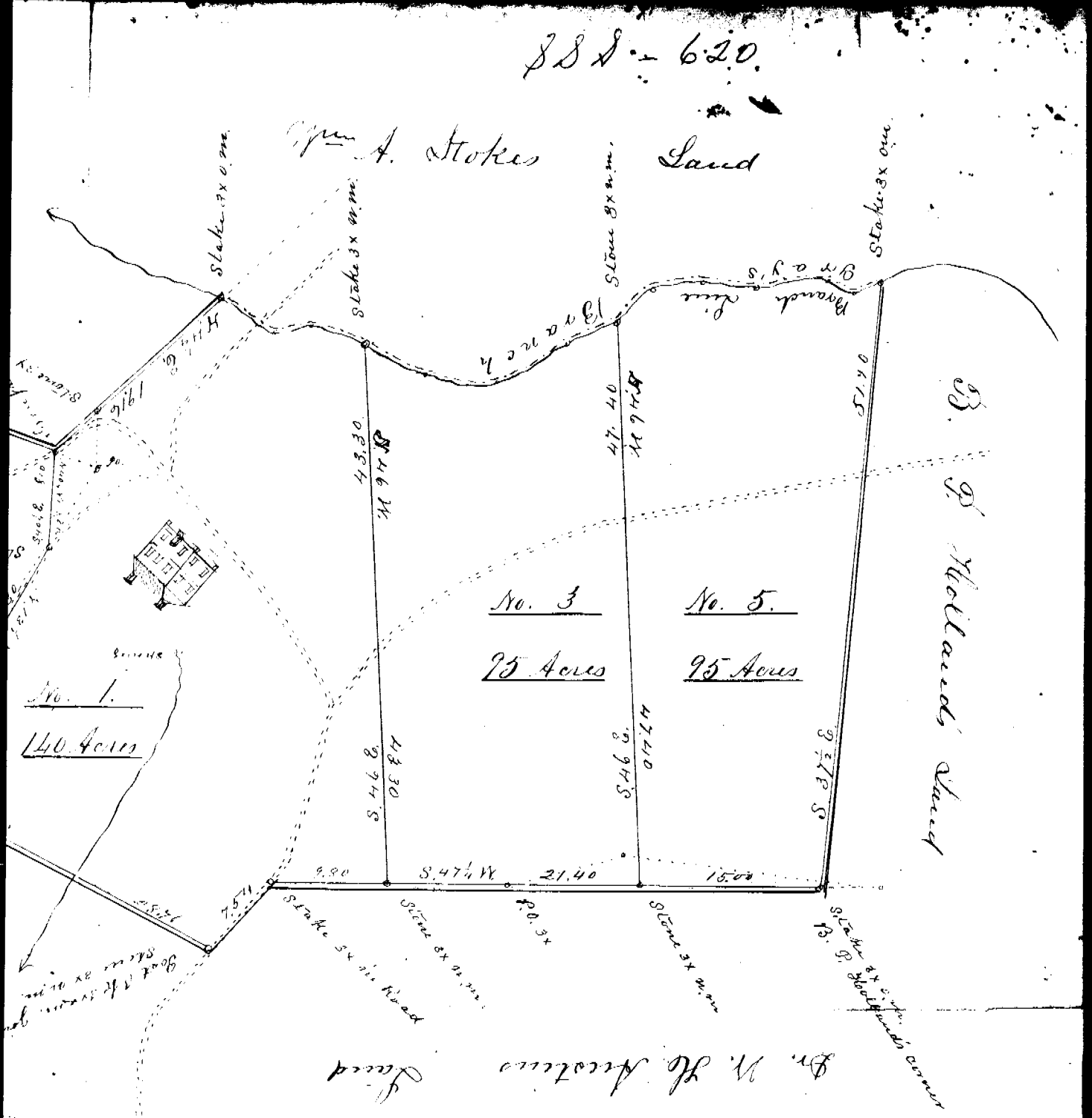


J.S.S. - 620.

Wm. A. Stokes Land



Scale of 100 feet to the Inch

an order from D. P. Vinner Esq. Master, I have surveyed a
 530) acres in the County and State aforesaid on Gilder's Creek
 of Thomas Austin, and which was formerly ~~was~~ a part of the
 divided the ^{same} into five separate tracts suitable for farms, and

October 1890.

J. N. Southern D.S.

Found in Judgment Case No. 1247.

19073
Jan. 4, 1973

Austin

J. Thomas

Greenville County - S. C.