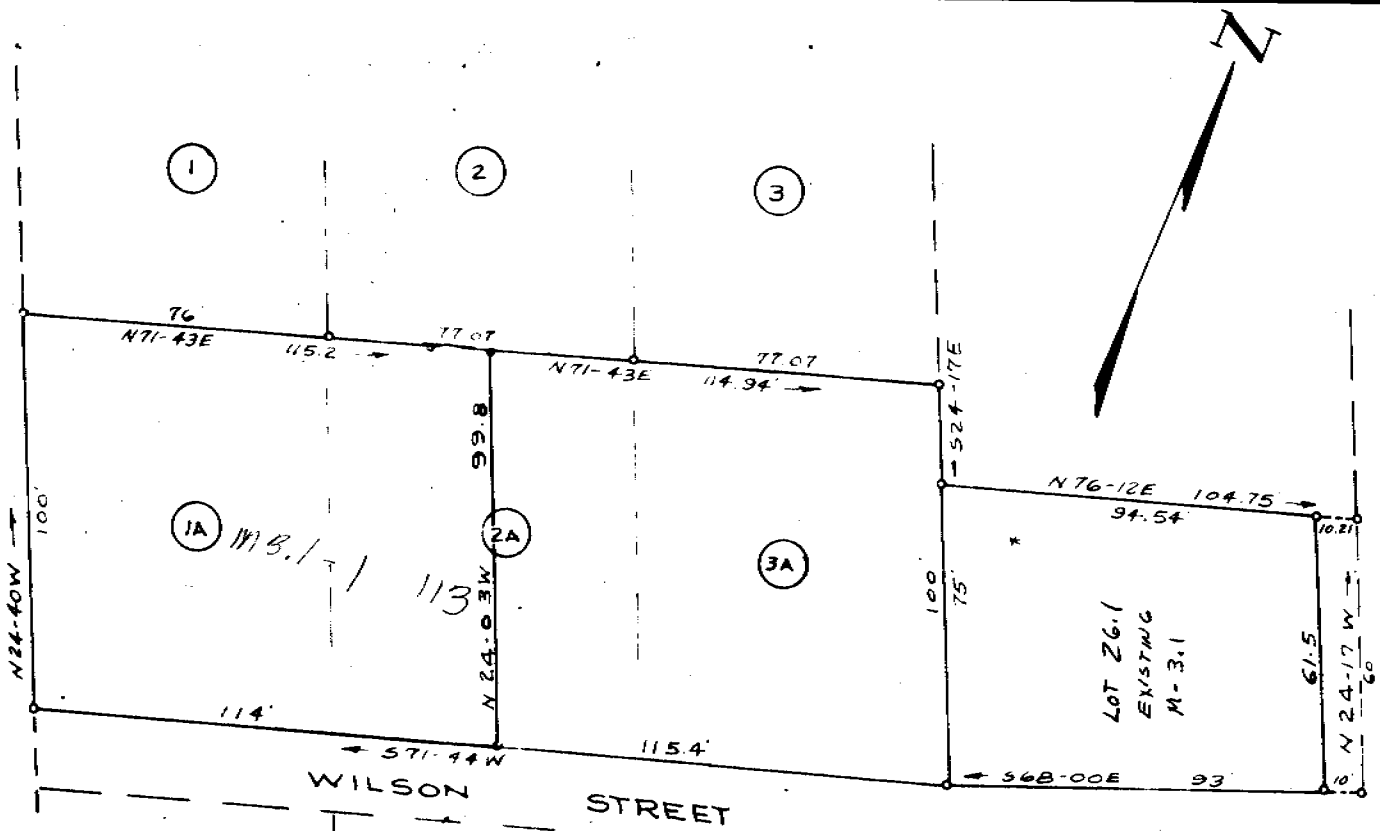


553-253



12833

THIS PLAT IS NOT A SUBDIVISION
 AS DEFINED BY THE GREENVILLE
 COUNTY SUBDIVISION REGULATIONS.

12/3/69 *Dore Williams* for
 Clerk, Secretary, or Director of
 Planning.
 Greenville County Planning Commission

NOTE: Above plat is a REVISION
 of Lots 1A, 2A, 3A, and Other Lot
 Not Numbered* Other Lots Shown
 on plat of J.W. WHITT BY C.O. Riddle
 June, 1960

PROPERTY OF
 J. W. WHITT
 MAULDIN, SOUTH CAROLINA
 SCALE 1"=40' AUG. 1968

DEC 3 1969

553-253

Approved - *Tom Forester*
 TOWN OF MAULDIN
 MAYOR

GREENVILLE COUNTY
 FILED
 12833

Recorded Dec. 3, 1969 at 3:29 P. M., #12833.