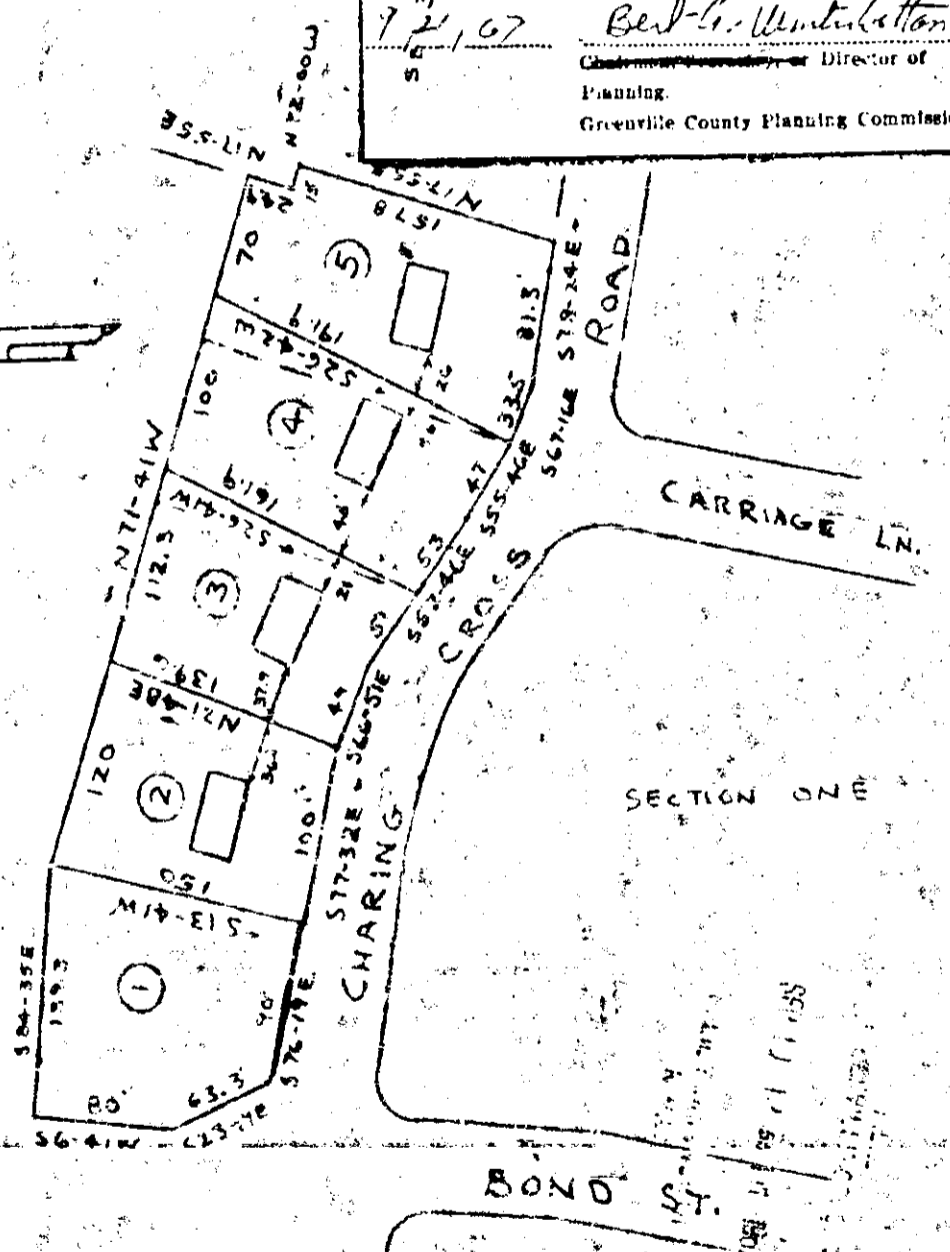


#8406 Filed This 19<sup>th</sup> day of Sept. 1967  
 And Recorded in Vol. R.R. - 141 at 12:53 P.M.  
*Ollie Farnsworth*  
 Register Mesne Conveyance Greenville County, S. C.

THIS PLAT IS NOT A SUBDIVISION  
 AS DEFINED BY THE GREENVILLE  
 COUNTY SUBDIVISION REGULATIONS.

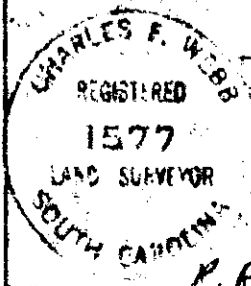
7/21/67 *Bert G. Wintubotton*  
 Chairman or Director of  
 Planning  
 Greenville County Planning Commission



A REVISION OF  
 SECTION TWO (PART ONE)

**BROOKWOOD FOREST**

SEP 19 1967  
 GREENVILLE COUNTY S.C.  
 J. F. WEBB SURVEYING & MAPPING CO.  
 SCALE 1" = 100'  
 SEPT. 8, 1967



R.R. - 141 S106

141