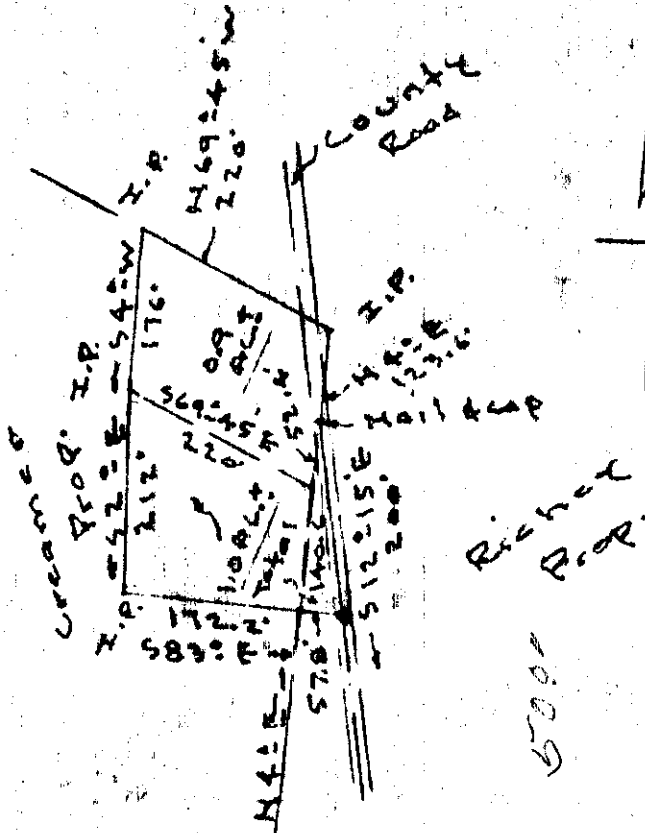


FILED
GREENVILLE CO. S.C.
OCT 7 10 24 AM 1965
ELLIE B. BARNES

OCT 7 1965



PROPERTY OF
HENRY L. ROSS

Greenville Co. S.C.
SCALE 1" = 200' - AUG. 13-65

.50¢

OCT 7 1965

10880

LL2 - 7

J.C. Hill-805

10880 Filed This 7 day of Oct. 1965
And Recorded in Vol. 882 Page 7 at 10:24 AM
Ellie B. Barnes
Register Mesne Conveyance Greenville County, S. C.