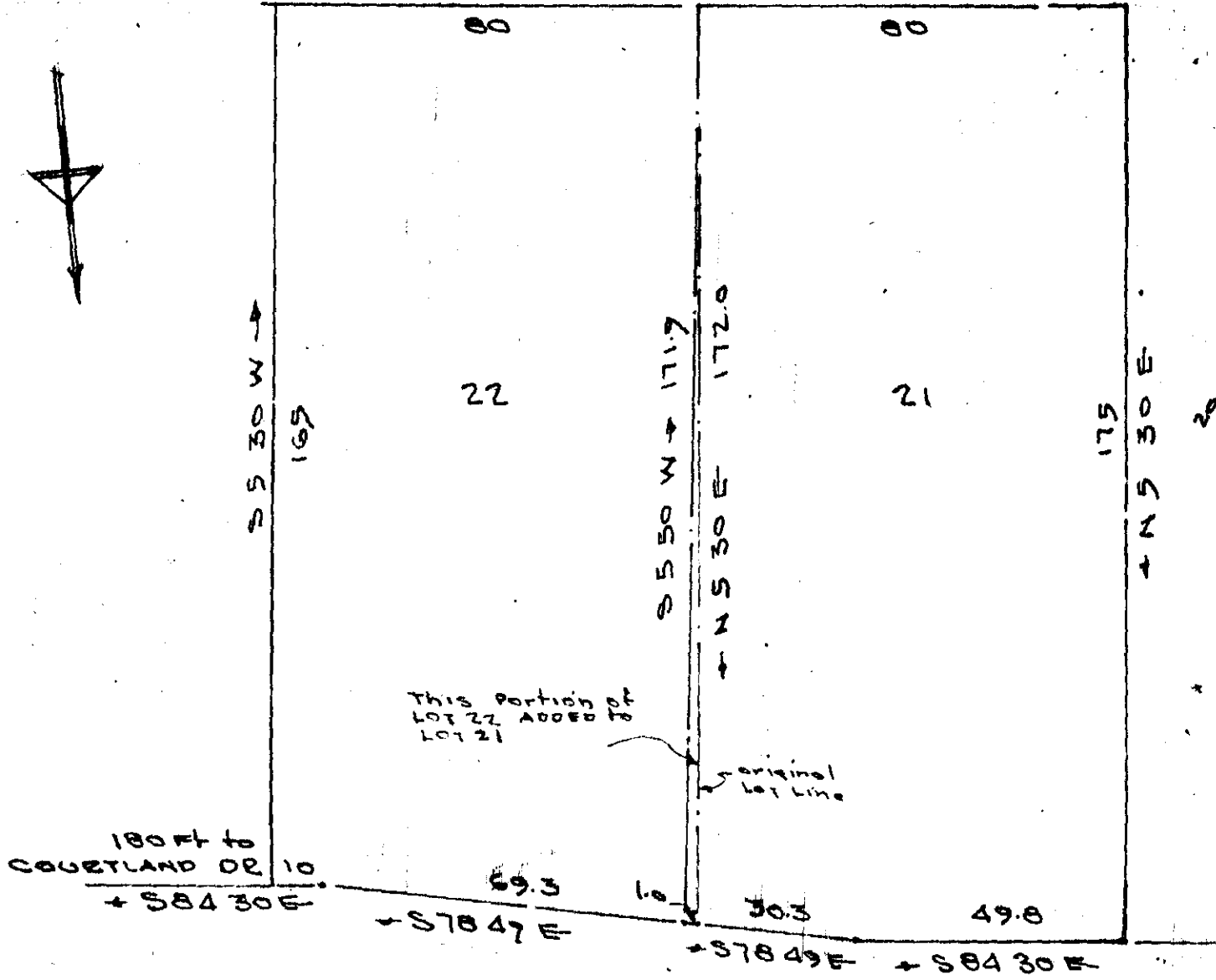




N 84 30 W →



FILED  
GREENVILLE CO. S.C.  
JUN 16 2 24 PM 1965  
OLLIE FARMWORTH  
R.M.C.

ARLENE

50 DR

PLAT SHOWING REVISION  
OF LOTS 22 AND 21

HIGHVIEW ACRES  
GREENVILLE COUNTY, S.C.  
Scale 1" = 30' JUNE 1965

JUN 16 1965  
35213

.50.  
III-168

JONES ENGINEERING SERVICES - GREENVILLE S.C.

35243 Filed This 16 day of June 19 65  
And Recorded in Vol. 117 Page 168 at M  
Ollie Farmworth  
Register Mesne Greenville County, S. C.