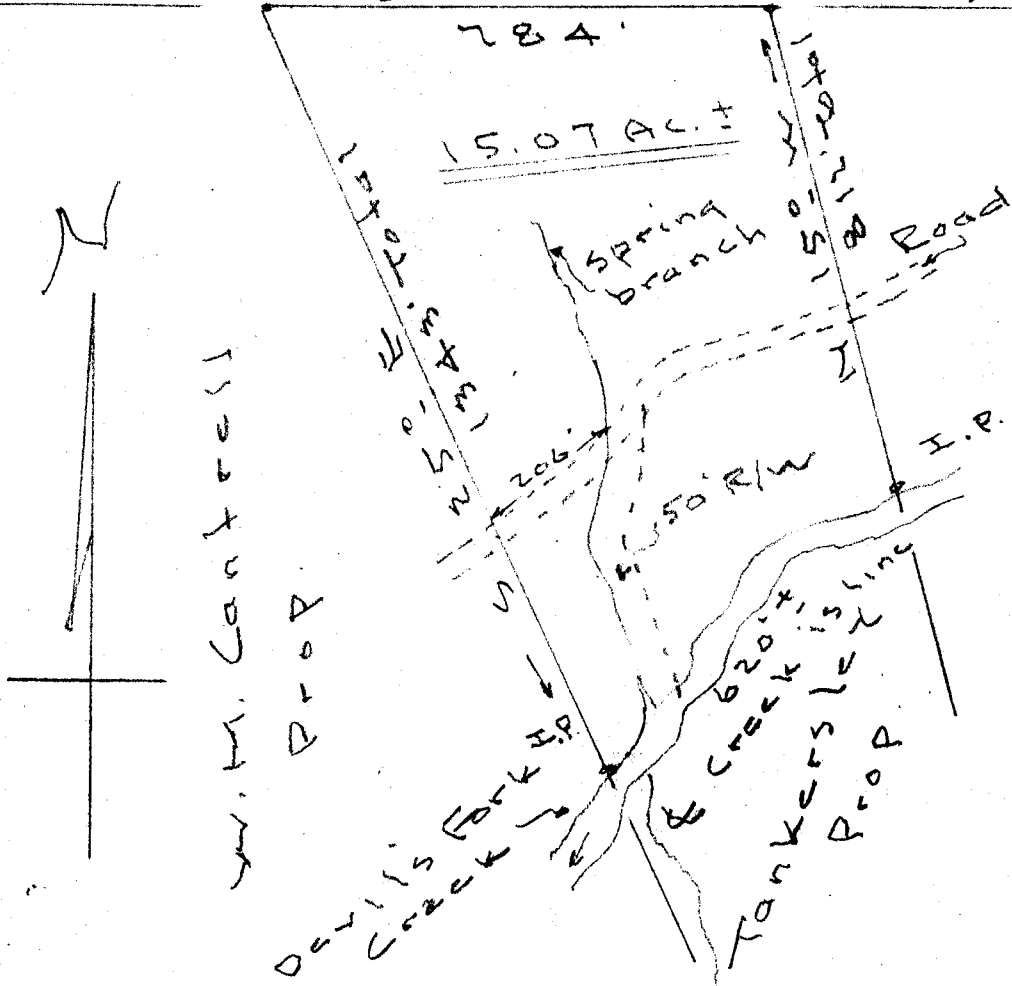


Timberlands Prop.

I.P. 589°-15' W I.P. old marked line



M. M. Cartress Prop.

Ruby Hawkins Prop.

FILED  
 GREENVILLE S.C.  
 OCT 19 8 38 AM 1961  
 OLLIE R. H. H. H.

PROPERTY OF  
 REBA MAE SLOAN  
 Devil's Fork Cr. Greenville Co.  
 Scale 1" = 300' - Sept. 23-61

ZZ-60

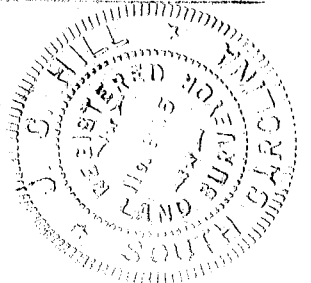
OCT 19 1961

10159

.50 parts in

4- Magnetic bearings

S.C. Hill - L.S. Bos



10159 Filed This 19 day of Oct-19-61

And Recorded in vol. 22 Page 60 at M.

*Edna Sawsworth*

Register Mesne Conveyas. Greenville County, S.C.