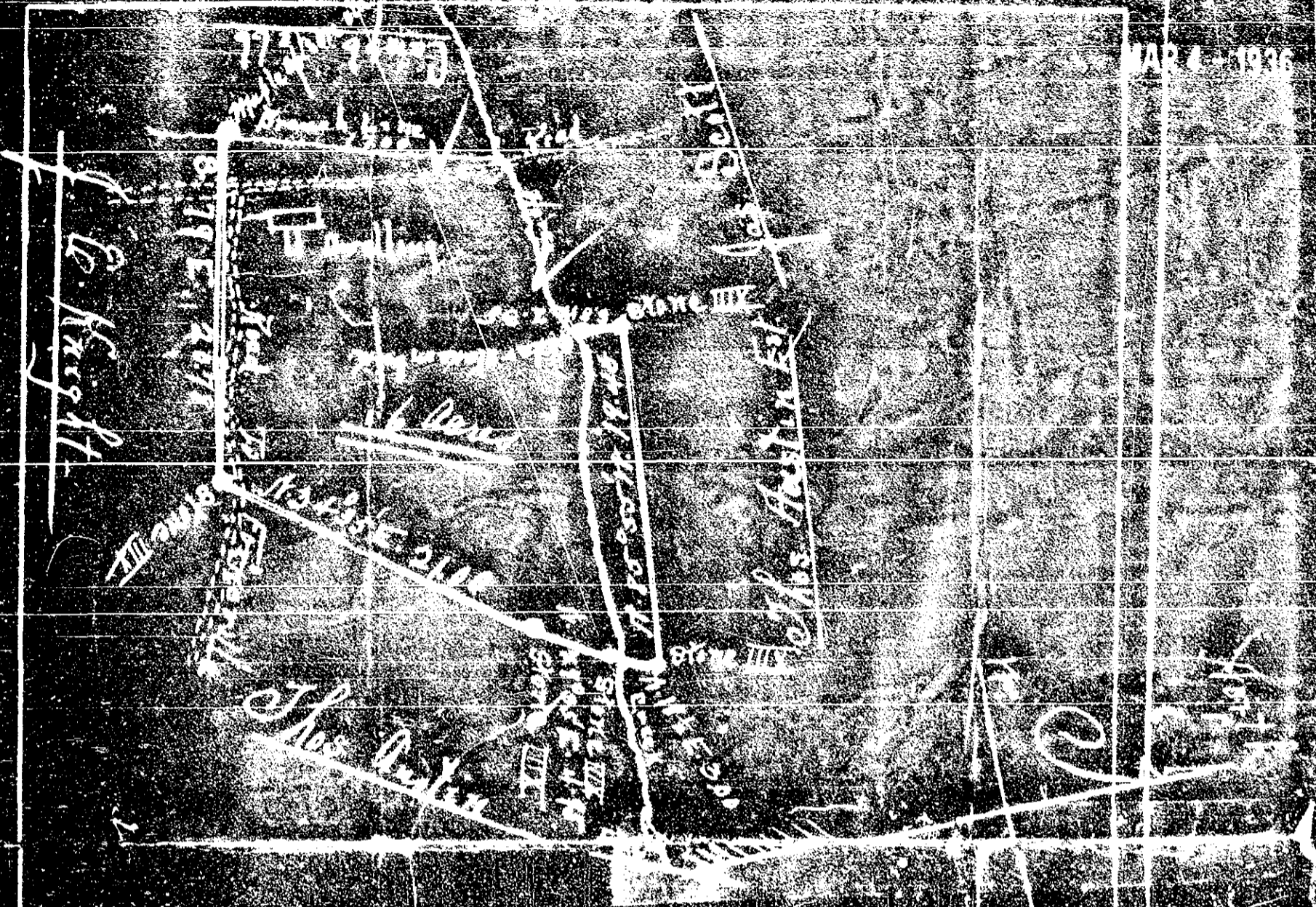


MAR 4 1936



Scale One chain per inch

Hot Spring location
Greenville County

By request of W. M. Thompson

hair was buried in the lower
 place first, a portion of the high water level
 to have been and down house creek to stake
 Geo. Serl? from stake to run N. 85 E 2.35 to
 corner in pine wood Quetz's land and for
 the run all back here but no water line

The place is said to contain 64 acres more
 or less. The above plot represents all available
 etc as we left here. W. M. Thompson
 Oct. 29-1912

9607 ... 13 ...
 ... 22 ... 55 ...
 ...
 ...