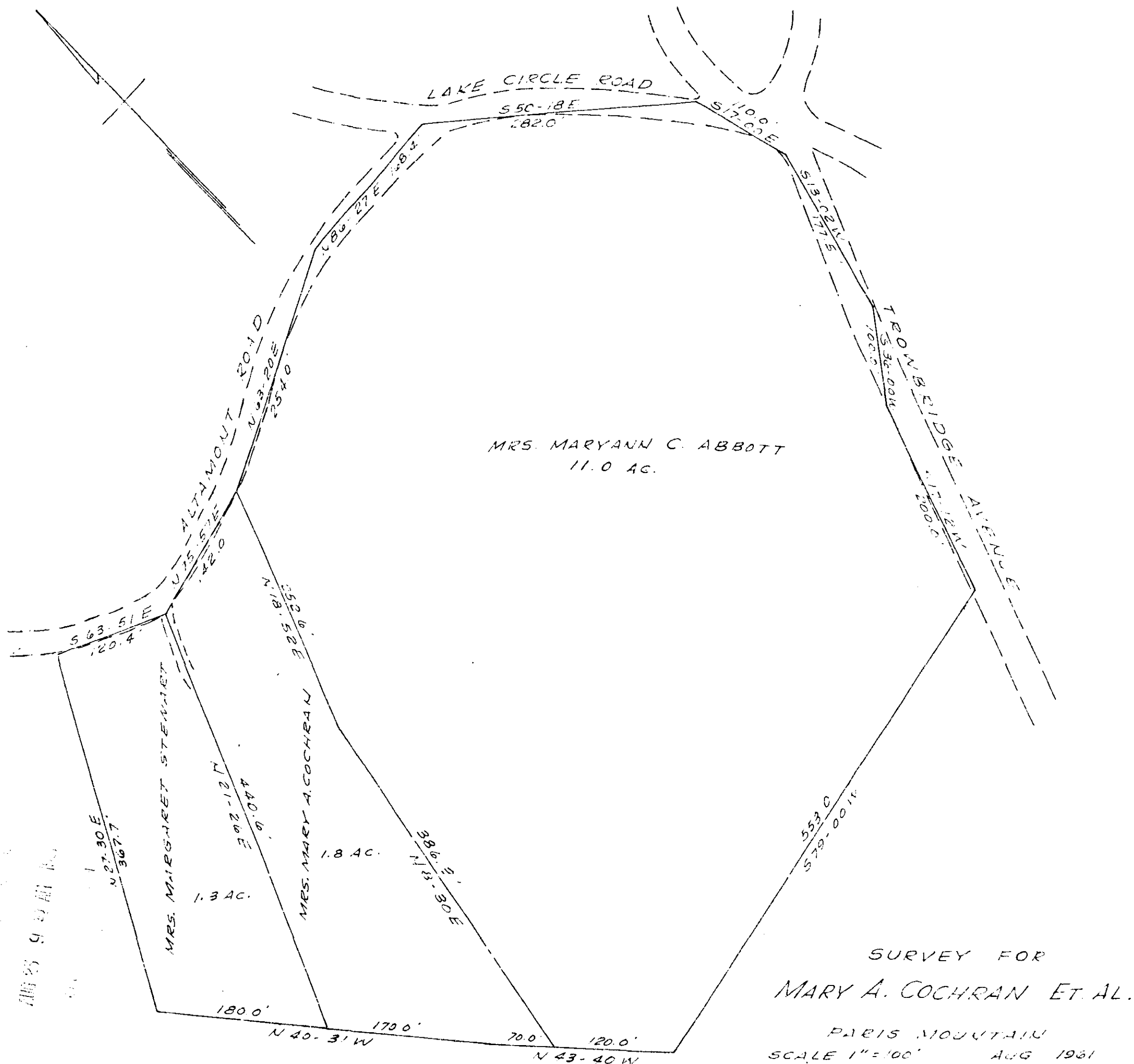


Plat Book ZZ, Page 9



SURVEY FOR
 MARY A. COCHRAN ET AL.
 PARIS MOUNTAIN
 SCALE 1"=100' AUG 1961

NOTE:
 DIVISION LINES BY P.E.S.
 PERIMETER SURVEY BY OTHERS

AUG 23 1961

5103

PIEDMONT ENGINEERING SERVICE
 GREENVILLE, S.C.

5103 Filed This 23 day of August 1961
 and Recorded in Vol 22 Page 9 of ...
 Eddie Saward
 Register-Measure Commissioner Greenville County, S.C.