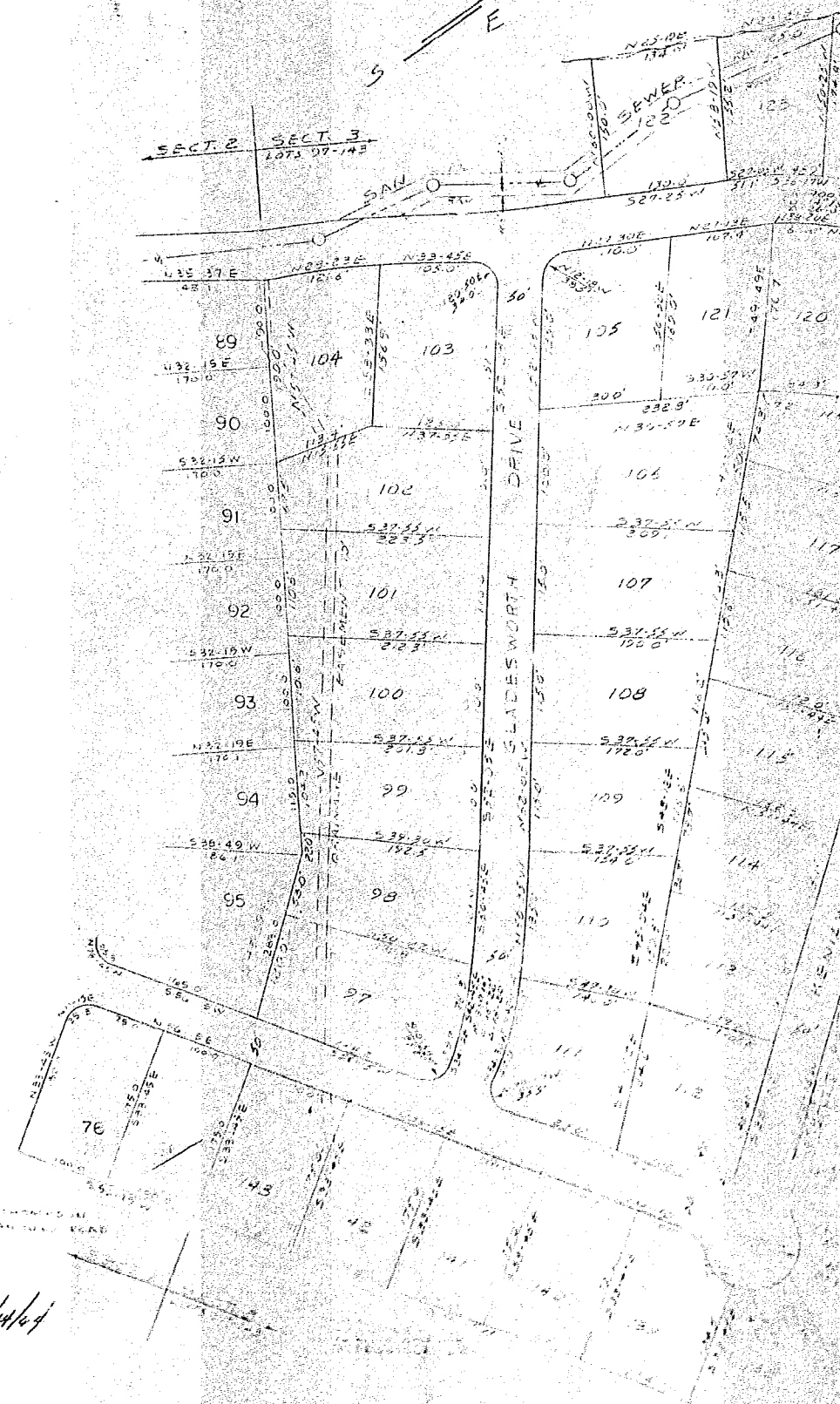


SECT. 2 SECT. 3  
1873 97-143



JOHNSON  
116  
WELLSWORTH  
SOUTH CAROLINA

FILED  
GREENVILLE CO. S. C.  
OCT 5 2 11 PM 1964  
OLIE PANSACRATH  
R. M. C.

*Plat Case, same Approval 10/4/64*  
**FINAL PLAN APPROVED**  
GREENVILLE CITY PLANNING & ZONING COMMISSION  
DATE *10/4/64* BY *[Signature]*  
SECRETARY OF COMMISSION

THE ABOVE SURVEY IS CORRECT  
AND THE ABOVE SURVEY IS  
SUBMITTED HEREON

BY *[Signature]*  
ACCEPTING THE ABOVE SURVEY AS CORRECT  
*Angela H. Brown*  
R. M. C.

SECTION THREE  
*Wellington Green*

PEDMONT ENGINEERING SERVICE  
GREENVILLE, S. C.

116

END OF DOC.



SECTION THREE  
 Ellington Green  
 NEAR GREENVILLE S.C.  
 SCALE 1"=20' APR 1964  
 R.M. 1007 104  
 MONT ENGINEERING SERVICE  
 GREENVILLE S.C.

PRINTED  
 SEP 12 1964

NOTE:  
 25' RADIUS AT ALL STREET CORNERS  
 55' SETBACK LINE ON ALL LOTS  
 20' " " ON " SIDE STREETS

901 5-1964  
 10176