

Plat Book-XX-Page 141

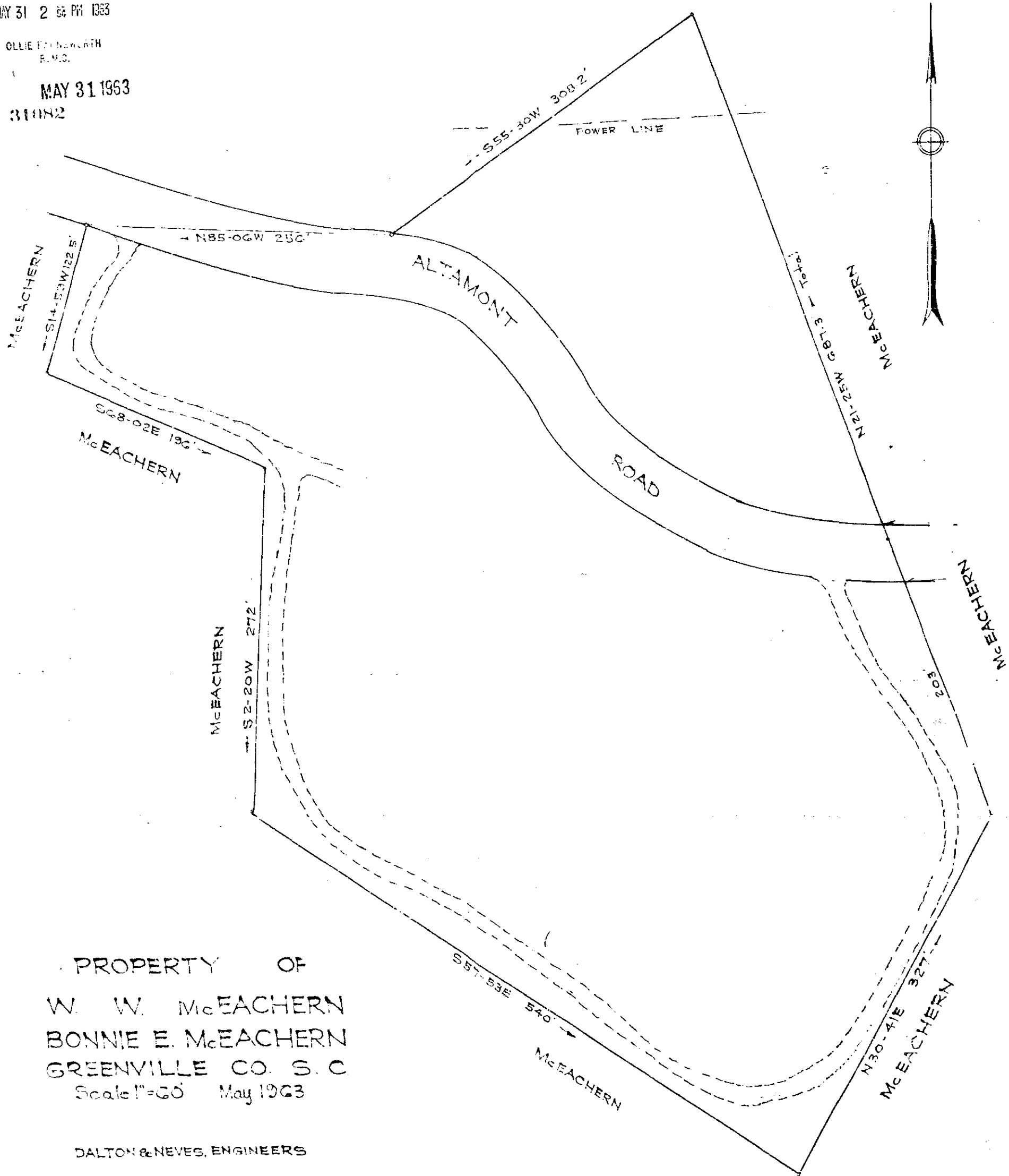
FILES
GREENVILLE CO. S. C.

MAY 31 2 52 PM 1963

OLLIE F. NEWBATH
R.M.C.

MAY 31 1963

31082



PROPERTY OF
 W. W. McEACHERN
 BONNIE E. McEACHERN
 GREENVILLE CO. S. C.
 Scale 1"=60' May 1963

DALTON & NEVES, ENGINEERS

832 Ac. Exclusive of Altamont Road

Iron Pins at all Corners.

350

Fee 2⁰⁰ XX-141

31082 Filed This 3rd day of May 1963
 And Recorded in Vol. 774 Page 141 at
 Register Mesne Conveyance Greenville County, S. C.