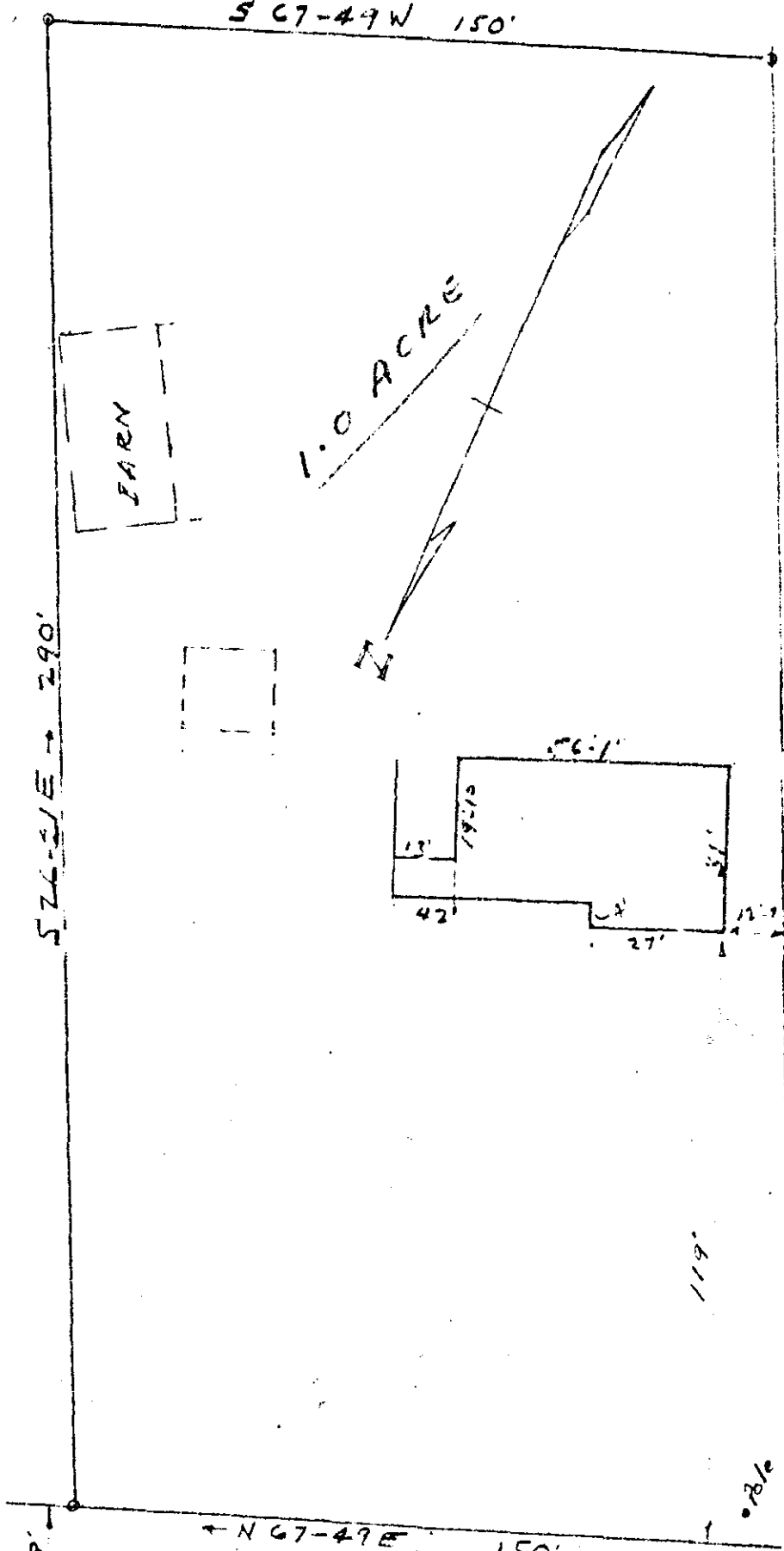


NELMS

S 67-49 W 150'



NELMS

NELMS

N 67-49 E 150'

562' To
CROSS AVENUE COR.

BAKER ROAD.

AUG 14 1961 PROPERTY OF
W. A. NELMS
1261 GREENVILLE COUNTY S.C.

SCALE 1" = 40' AUG 14, 1961

Plat in 50 VV-161

SURVEYED BY R. K. Campbell

5-78

4261: Plat this 14th day of Aug. 1961
and Recorded in Vol. V V Page 161 at

W. A. Sanson

Register Messie Commissioner Greenville County, S. C.