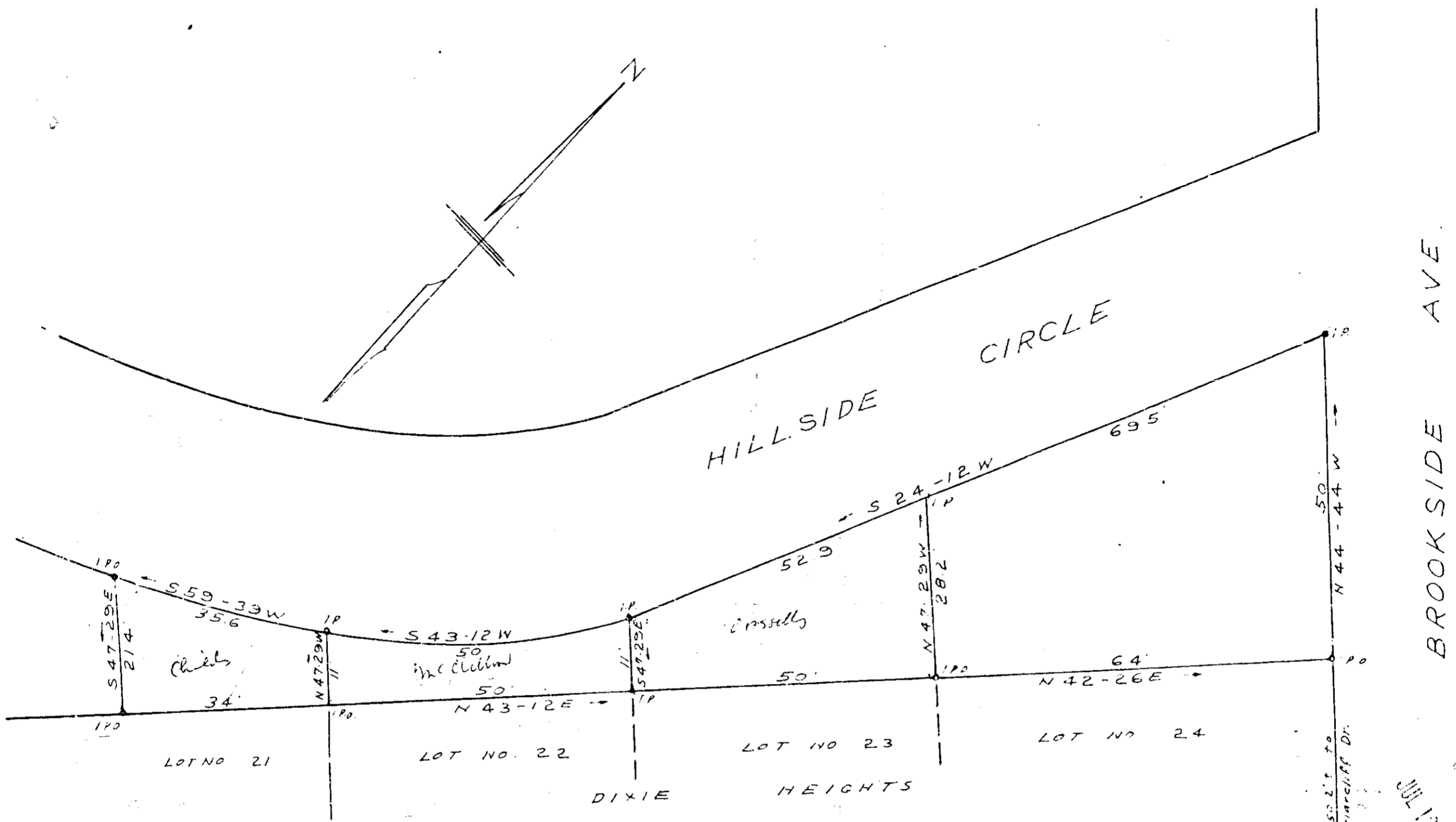


Plat Book VV, Page 154



PROPERTY OF
 P. R. LONG & W. C. VESS
 GREENVILLE S. C.

SCALE 1" = 20'

MAY 4, 1961

JUL 12 1961
 1523

C. O. Peck - Reg. L.S.

VV-154

1523 Filed This 12 day of July 1961
 and Recorded in Vol. V.V. Page 54 at 4

Codie Sawworth

Register Means Landmark Greenville County, S. C.